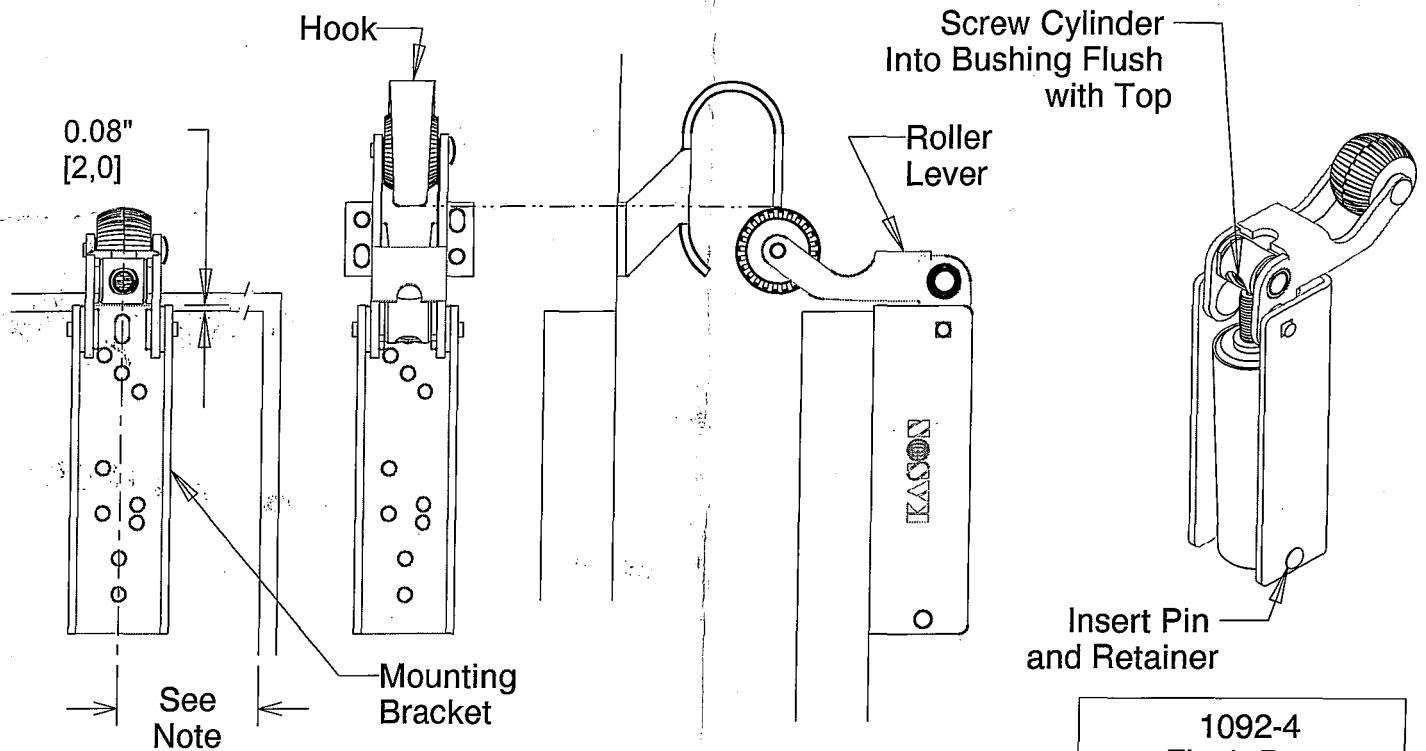


INSTALLATION INSTRUCTION SHEET

1092 - DOOR CLOSER



1. Attach mounting bracket to door approximately at center and flush with top edge using four mounting screws. (must have a backing behind sheet metal)
2. Push roller lever forward (at right angle to mounting bracket) so that it overlaps door.
3. Attach hook to the door frame, aligning it with roller. Use two slots first, to permit the following adjustments:
 - a. Rubber roller should touch and slightly revolve as it passes top lip of hook when door is closing.
 - b. The hook must be on the same centerline as mounting bracket when door is closed.
4. Complete fastening of hook with 2 remaining screws.
5. With door open, position roller lever in the up position by screwing cylinder into bushing until shaft is about flush w/ bushing top surface and bottom hole of cylinder lines up with hole in body. Assemble pin through cylinder and body, securing with retainer.
6. After cylinder assembly, push roller lever forward, overlapping top edge of the door. Closer is ready to operate - check function.

NOTE: Mounting closer to the latch side of door will give more closing force and less reach. Closing speed set at factory. Do not attempt to adjust.

