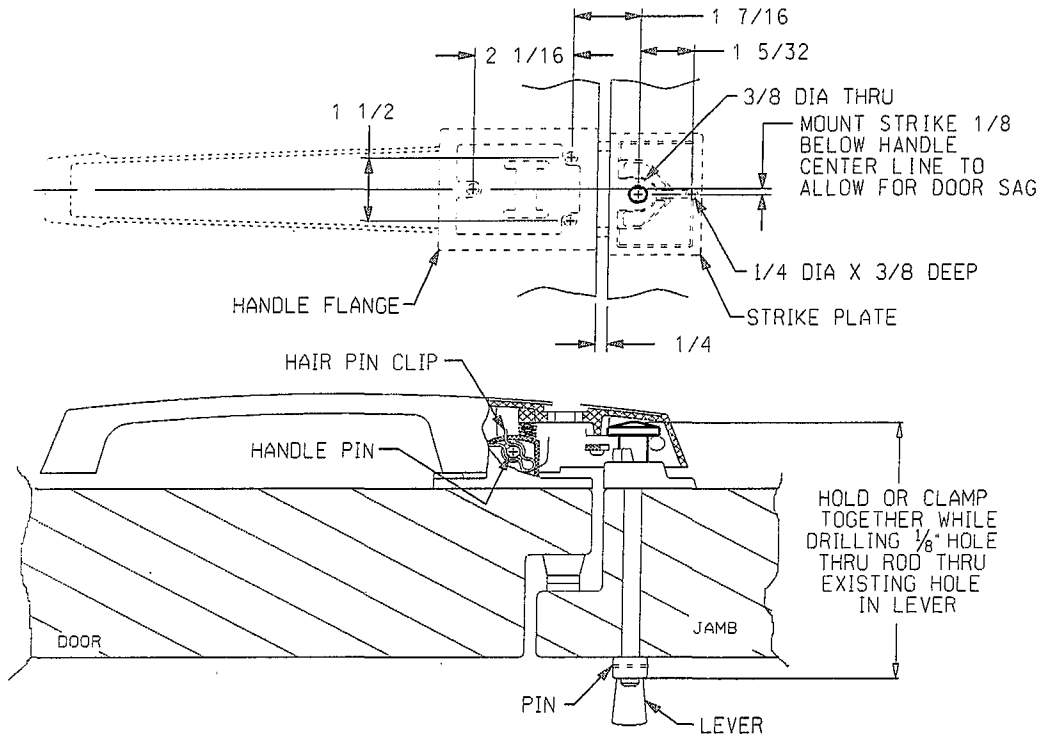
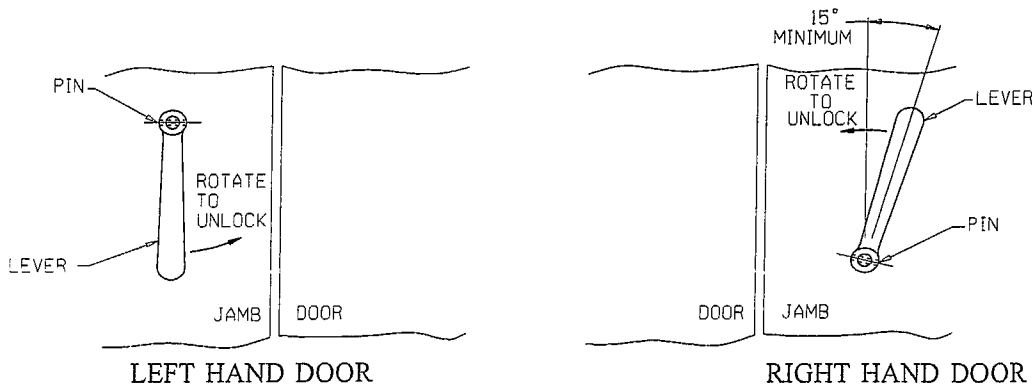




1236 LEVER HANDLE - MOUNTING INSTRUCTIONS



- 1) MOUNT THE HANDLE FLANGE FLUSH WITH THE EDGE OF THE DOOR AS SHOWN IN THE FIGURE ABOVE.
- 2) WITH THE DOOR CLOSED, MEASURE 1-7/16" HORIZONTALLY FROM THE FRONT HOLE IN THE FLANGE, DRILL A 3/8" DIAMETER HOLE THRU THE JAMB. NEXT, MEASURE 1-5/32" HORIZONTALLY FROM 3/8" HOLE AND DRILL A 1/4" DIAMETER X 3/8" DEEP HOLE.
- 3) INSERT THE BRASS ROD OF THE STRIKE THRU THE STRIKE PLATE. (SEE FIGURES BELOW FOR CORRECT LEVER POSITION ON RIGHT AND LEFT HAND DOORS), DRILL A 1/8" DIAMETER HOLE THRU EXISTING HOLE IN LEVER AND THRU THE ROD. DRIVE THE PIN THRU THIS HOLE.
- 4) INSERT THE SPRING OVER THE POST ON THE HANDLE FLANGE, LINE UP SPRING WITH THE HOLE IN THE HANDLE, THEN, LINE UP THE HOLES IN THE HANDLE AND FLANGE WHILE INSERTING THE HANDLE PIN IN TO THE HANDLE AND FLANGE HOLES. WITH THE DOOR OPEN, INSTALL THE HAIR PIN CLIP ON TO THE HANDLE PIN FROM BELOW THE HANDLE.



VIEWS FROM THE INSIDE