

APPROVED FOR COLD STORAGE

LED LINEAR LIGHTING

The SmoothLite LED linear lighting products provide an even distribution of high output light. Highly efficient midpower LEDs running at constant current make the linear SmoothLite an excellent solution for a variety of lighting needs.



PRODUCT DETAILS

Intended Use

The Smooth Light LED overhead lights are designed for new projects or retro-fit projects.

Construction & Materials

High quality aluminum rail incorporating heat sink technology. High impact resistant mounting clips.

Optical System

Several different wide and narrow light distribution options available.

Electrical System

Class 2 low voltage LED driver; Input voltage 120V-277V

Installation

Quick and easy installation using the provided mounting clips.

Recommended Uses

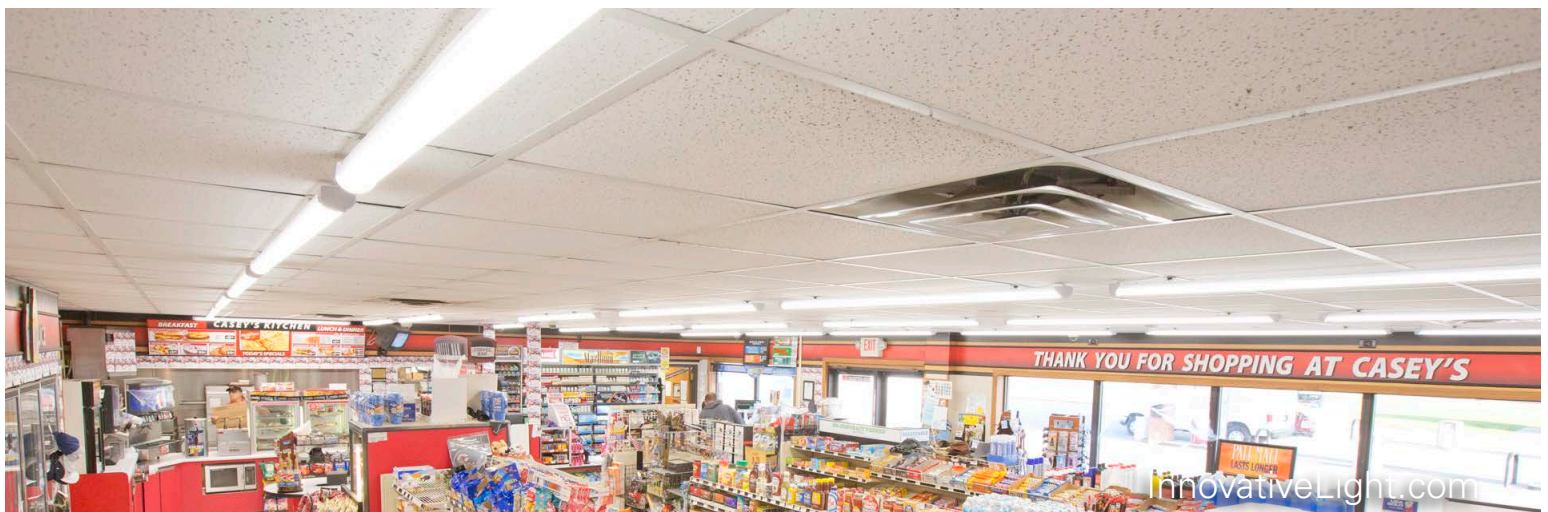
Warehouses
Walk-In Coolers
Garages
Production Areas
Retail

Listings

UL Listed
RoHS Compliant
DLC Qualified
LED Lighting Facts Approved

Warranty

Smooth Light products come with a 10 year warranty for parts manufactured and furnished by Innovative Lighting, LLC. Standard terms and conditions apply.





SPEC INFORMATION

Part Number	Number of LEDs	CRI (nominal)	CCT (nominal)	Efficacy	Average L70 Life (hrs)	Dimensions	Weight	Energy (Watts)	Lumens (typical)
785-5226-4*	420	88.4	5000 K	104 lm/W	120,000	68.25"L 2.25"W 1.75"D	3.55 lbs (2x)	99.4	10350
785-6226-4*	420	86.4	4000 K	102 lm/W	120,000	68.25"L 2.25"W 1.75"D	3.55 lbs (2x)	99.5	10180
785-6224-4*	280	86.4	4000 K	103 lm/W	120,000	46.13"L 2.25"W 1.75"D	2.55 lbs (2x)	65.5	6770

*785-X22Y-4 kit consists of two 785-X22Y-1 light fixtures.

Part Number	Number of LEDs	CRI (nominal)	CCT (nominal)	Efficacy	Average L70 Life (hrs)	Dimensions	Weight	Energy (Watts)	Lumens (typical)
785-5226-1	210	88.4	5000 K	102 lm/W	120,000	68.25"L 2.25"W 1.75"D	3.55 lbs	50.2	5125
785-5224-1	140	86.4	5000 K	101.1 lm/W	120,000	46.13"L 2.25"W 1.75"D	2.55 lbs	33.3	3370
785-6226-1	210	86.4	4000 K	100.2 lm/W	120,000	68.25"L 2.25"W 1.75"D	3.55 lbs	49.8	4990
785-6224-1	140	86.4	4000 K	101.4 lm/W	120,000	46.13"L 2.25"W 1.75"D	2.55 lbs	32.7	3320

PART NUMBER INFORMATION



Notes:

- 785-5226-4 is DLC Qualified as a High-Bay Fixture for a 120V or 240V input
- 785-5226-4 & 785-6226-4 require two 785-9991-1 LED drivers or a Listed 785-9991-4 power unit
- 785-6224-4 requires two 785-9990-1 LED drivers or a Listed 785-9990-4 power unit
- 785-5226-1 & 785-6226-1 is DLC Qualified as a Low-Bay Fixture for a 120V or 240V input
- 785-5226-1 & 785-6226-1 require one 785-9991-1 LED driver or a Listed 785-9991-4 power unit for two fixtures 785-9991-4-1 for one fixture
- 785-5224-1 & 785-6224-1 require one 785-9990-1 LED drivers or a Listed 785-9990-4 power unit

