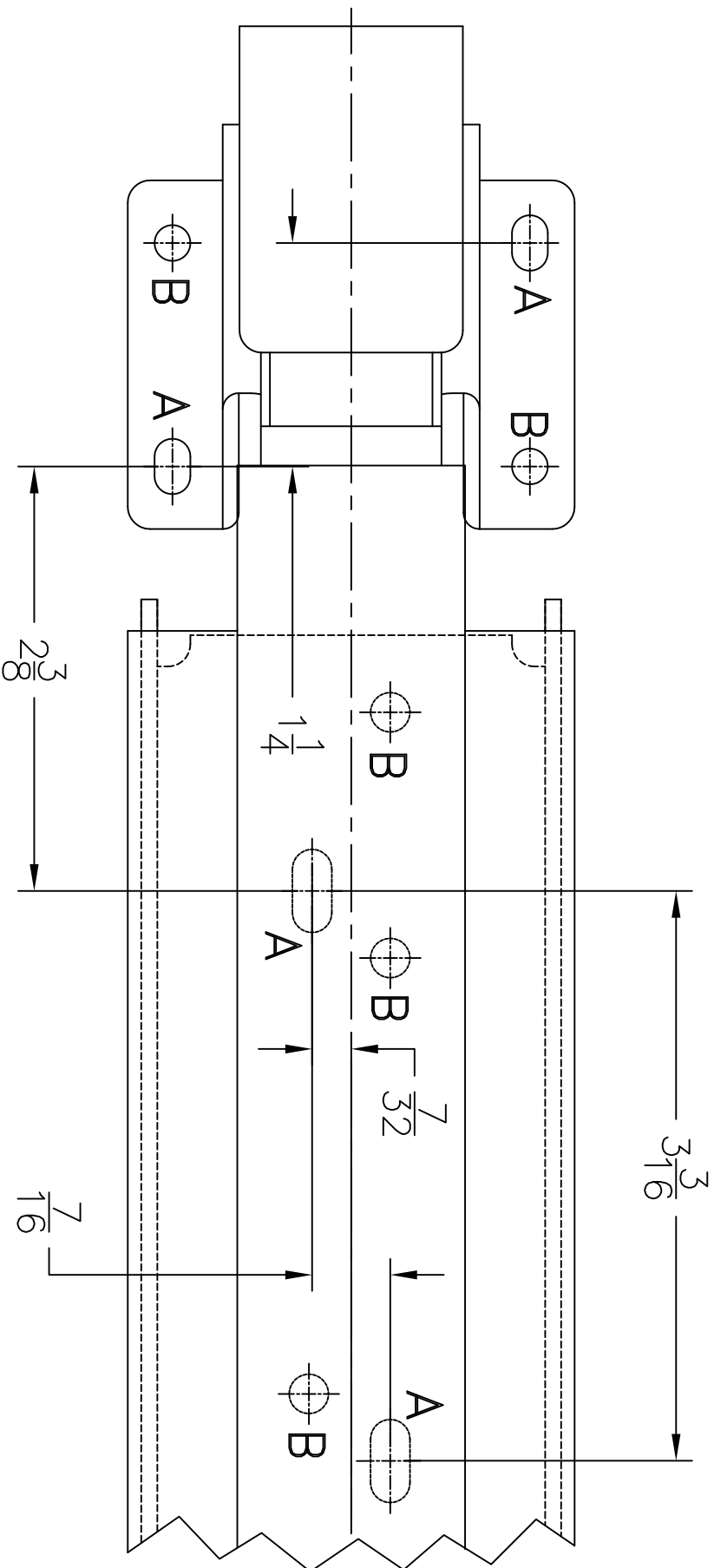


THIS LINE MUST MEASURE 6 INCHES LONG TO VERIFY THIS TEMPLATE



INSTRUCTIONS:

- 1- DRAW VERTICAL CENTERLINE ON DOOR AND ON FRAME
- 2- SPOT AND DRILL 5/32" HOLES AT CROSS LINES IN 4 LOCATIONS MARKED "A"
- 3- ASSEMBLE ALL PARTS AND CHECK FOR PROPER OPERATION
- 4- ADJUST AS REQUIRED BY LOOSENING SCREWS & SLIDING MEMBERS IN ELONGATED HOLES TO OBTAIN ADJUSTMENT
- 5- AFTER OBTAINING SATISFACTORY ADJUSTMENT, TIGHTEN SCREWS & INSTALL 5 MORE SCREWS IN THE HOLES MARKED "B"

COMPONENT HARDWARE GROUP, INC.
LAKEWOOD, NEW JERSEY

W94 DOOR CLOSER
 MOUNTING TEMPLATE

DATE
 7/20/05

SIZE
A

DWG NO.

W94-TEMPLATE

REV