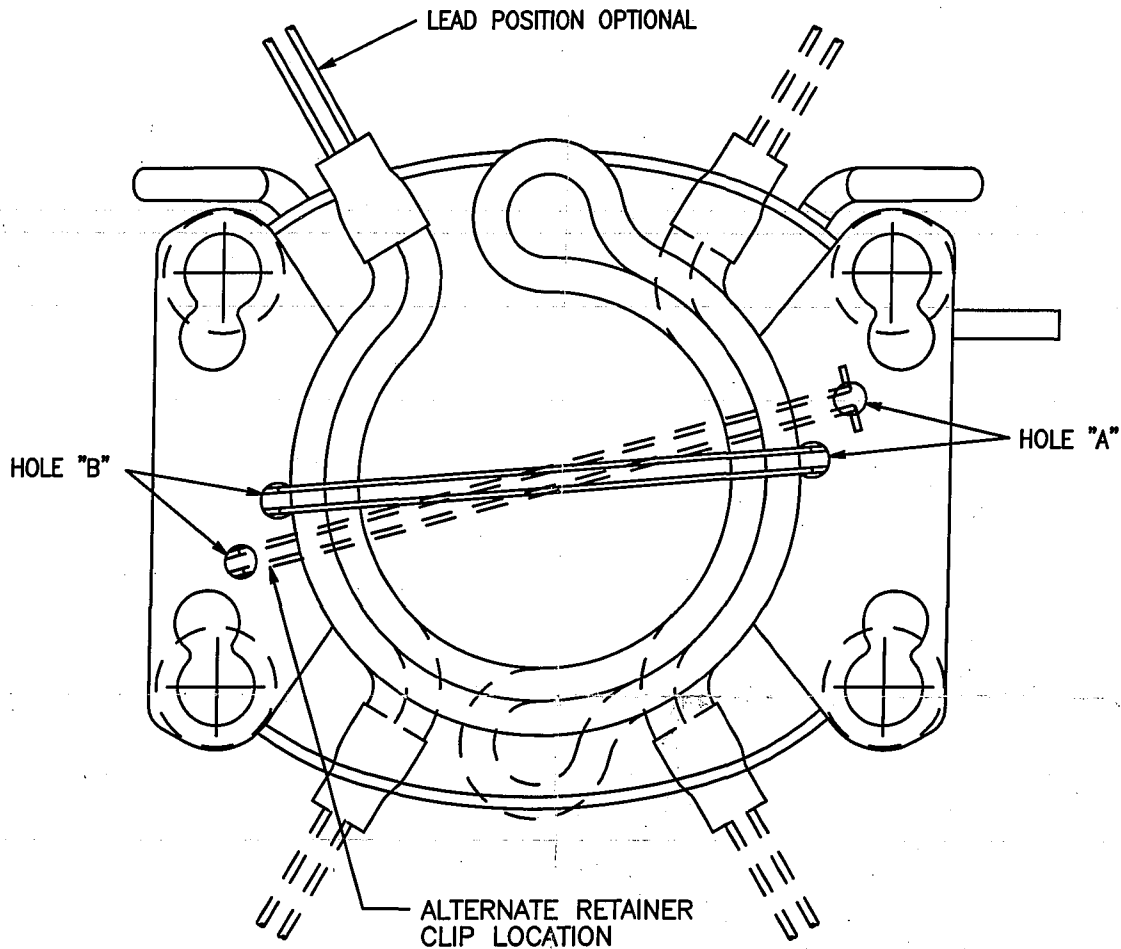


# Crankcase Heater Mounting Instructions for "A\*B" and "A\*E" Compressors



CAUTION: DO NOT TURN COMPRESSOR UPSIDE DOWN.  
LAY COMPRESSOR ON SIDE OPPOSITE SERVICE TUBE CONNECTIONS.  
POSITION CRANKCASE HEATER LEADS AS NEEDED AND INSERT CLOSED  
END OF STAINLESS STEEL RETAINER IN HOLE "A" OR "B".  
SLIDE RETAINER INTO HOLE UNTIL IT STOPS.  
INSERT OPEN END OF RETAINER INTO THE REMAINING HOLE AND SLIDE  
RETAINER UNTIL IT STOPS OR SPRINGS INTO PLACE.

NOTE: TALLER MOUNTING PARTS SHIPPED WITH CRANKCASE HEATER KIT  
MUST BE INSTALLED.

052-2289-00

9-07