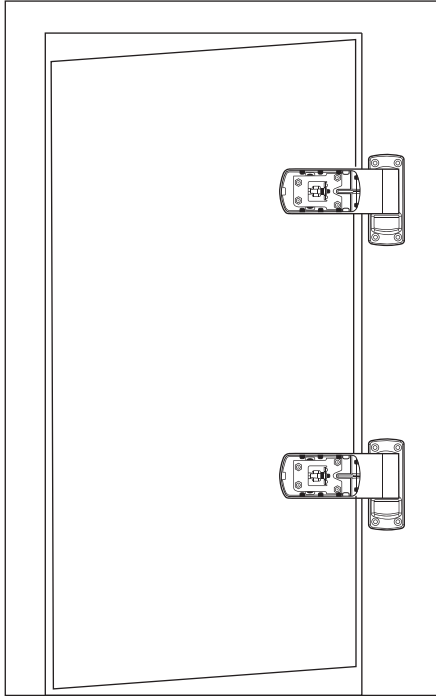
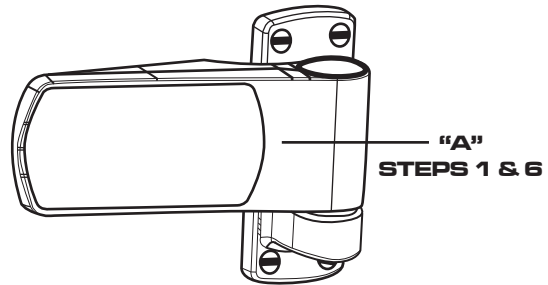


Adjustable Hinge Adjustment Instructions



1. Remove access cover by depressing point "A" and pulling it outward.



2. Loosen 4 mounting screws on each strap, but do not remove screw.

3. Open door to break seal with magnetic gasket.

4. Adjust tip of door up by turning top hinge adjustment screw clockwise (opposite for Left Hand Door) and the bottom hinge adjustment screw counter-clockwise (opposite for Left Hand Door) so door spacing is even.

5. Tighten 4 mounting screws on each hinge.

6. Replace cover by inserting point "A" first.

TO ADJUST DOOR SAG

