



**COMPONENT**  
HARDWARE®

# WALK-IN REFRIGERATION COMPONENTS



## Member Organizations

Component Hardware Group is a proud member of the following organizations



Products shown in this catalog may be listed and/or certified by one or more of the following regulatory agencies and will be designated by the following marks



DESCRIPTION	PAGE	DESCRIPTION	PAGE
<b>A</b>		<b>M</b>	
ACCESSORIES	EE27	MOULDING, SNAP-ON	EE27
<b>D</b>		<b>P</b>	
DOOR CLOSERS	EE14 - EE16	PANEL FASTENERS	EE21 - EE26
<b>F</b>		PANIC BAR	EE5
FINISHING CAP, SNAP-IN	EE27	POWER SPRING CONVERSION CARTRIDGE	EE10
FOOT TREADLE	EE2	<b>S</b>	
<b>H</b>		SAFETY LATCHES	EE2 - EE3
HANDLES	EE1	SAFETY RELEASE	EE4 - EE5
HEX WRENCH	EE27	SILICONE SEALER	EE27
HINGES	EE6 - EE13	<b>T</b>	
LIFT-OFF	EE9	TAPE, PRESSURE SENSITIVE INDUSTRIAL	EE27
HEAVY-DUTY	EE11 - EE13	THERMOMETERS	EE17
HEAVY-DUTY CAM-RISE	EE10	<b>V</b>	
INVESTMENT CAST	EE6 - EE7	VENT PORTS	EE18 - EE19
OUTDOOR ENCLOSURE	EE8	<b>W</b>	
<b>L</b>		WINDOW PORT	EE20
LATCHES	EE2 - EE3		

All photographs and illustrations are considered to be a representation of the actual item. In some cases there may be slight variations.  
 This catalog, copy, part numbers and unique method of illustrating products is copyrighted by Component Hardware Group, Inc. All rights reserved.  
 No portion of this catalog may be reproduced in any form or by any means in whole or in part, without the written consent of Component Hardware.  
 Component Hardware reserves the right to make any and all changes and to discontinue any of its products without notice.

Not responsible for typographical errors.  
 \*May not be identical to competitors' products

# Hinge Selector Guide & Chart

## COMPONENT HARDWARE HINGE SELECTOR GUIDE

This hinge selector is designed to assist you in choosing the correct Component Hardware hinges for commercial reach-in and walk-in refrigeration, foodservice equipment, transportation, industrial and other applications. The Load Chart below shows our recommended allowable load per pair of hinges for each hinge group.

The data supplied in this chart applies for normal operating conditions under static loading by door weight only. Other factors, such as positive or negative pressure, high gasket compression, lateral stress, corrosive or abrasive environments, or structural movement are not taken into account. It is the ultimate responsibility of the user to determine the suitability and capacity required for their specific application.

## HOW TO USE THIS CHART

1. Locate the weight of your door in the far left column, headed DOOR WEIGHT.
2. Find the width of your door along the bottom of the chart.
3. Where the weight line and width column intersect, find the recommended hinge group code (A, B, etc.)
4. Select your hinges from the Component Hardware® hinge groups below.

NOTE: If exact dimensions and weight for your door is not shown, use the next higher width and weight.

Hinge Groups A-C Shown in REACH-IN, Section E

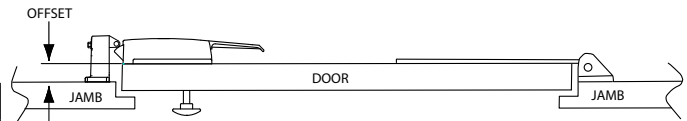
Hinge Groups D-J Shown in WALK-IN, Section EE

## COMPONENT HARDWARE HINGE GROUPS

GROUP	HINGE MODEL NUMBERS
A	R20-1010, R20-1020, R45-1010, R40-1010, R42-2840, R42-2841, R42-2842, R42-2843, R42-2842-BR
B	R42-2000, R42-2855, R56 SERIES
C	R50-2850, R50-2850-SPO, R50-2850-BLK, R50-2850-SS, R50-2850-NL, R50-2850-BA
D	W58, W59, W60, W61 SERIES, W99-6015-SS, W99-4100-SSRH, W99-4100-SSLH, W55-1000, W56-1000
E	N/A
F	W99-2001, W99-2001-GE, W99-2063, W99-2063-G6, W77-1625
G	N/A
H	N/A
J	N/A

## HOW TO DETERMINE OFFSET FOR HINGES AND LATCHES

With door closed, measure the distance from the jamb to the door face.



DOOR WEIGHTS		LOAD CHART										<div><div><div></div><div>JAMB</div></div><div><div></div><div>DOOR</div></div><div><div></div><div>JAMB</div></div></div>											
kg.	lb.																						
226.8	500	D	D	E	F	F	F	G	G	G	G	H	H	H	H	H	H	H	J	J	J	J	
217.7	480	D	D	E	F	F	F	G	G	G	G	H	H	H	H	H	H	H	J	J	J	J	
208.6	460	D	D	E	E	F	F	F	G	G	G	G	H	H	H	H	H	H	H	J	J	J	
199.5	440	D	D	D	E	F	F	F	G	G	G	G	G	H	H	H	H	H	H	H	J	J	
190.5	420	D	D	D	E	F	F	F	F	G	G	G	G	H	H	H	H	H	H	H	H	J	
181.4	400	D	D	D	E	E	F	F	F	G	G	G	G	G	H	H	H	H	H	H	H	H	
172.4	380	D	D	D	D	E	F	F	F	F	G	G	G	G	G	H	H	H	H	H	H	H	
163.3	360	D	D	D	D	E	E	F	F	F	G	G	G	G	G	G	H	H	H	H	H	H	
154.2	340	D	D	D	D	E	E	F	F	F	F	G	G	G	G	G	G	H	H	H	H	H	
145.2	320	C	D	D	D	D	E	E	F	F	F	F	G	G	G	G	G	G	H	H	H	H	
136.1	300	C	D	D	D	D	D	E	E	F	F	F	F	F	G	G	G	G	G	G	G	H	
127.0	280	C	D	D	D	D	D	E	E	F	F	F	F	F	G	G	G	G	G	G	G	H	
117.9	260	C	C	D	D	D	D	D	E	E	F	F	F	F	F	G	G	G	G	G	G	G	
108.9	240	C	C	D	D	D	D	D	D	E	E	F	F	F	F	F	F	G	G	G	G	G	
99.8	220	C	C	C	D	D	D	D	D	D	E	E	E	F	F	F	F	F	F	G	G	G	
90.7	200	B	C	C	D	D	D	D	D	D	D	E	E	E	F	F	F	F	F	F	F	G	
81.7	180	B	C	C	C	D	D	D	D	D	D	D	E	E	E	E	F	F	F	F	F	F	
72.6	160	B	B	C	C	C	D	D	D	D	D	D	D	D	E	E	E	E	F	F	F	F	
63.5	140	B	B	C	C	C	C	D	D	D	D	D	D	D	D	D	D	E	E	E	E	F	
54.4	120	B	B	B	C	C	C	C	C	D	D	D	D	D	D	D	D	D	D	D	E	E	
45.4	100	A	B	B	B	B	C	C	C	C	C	D	D	D	D	D	D	D	D	D	D	D	
36.3	80	A	A	B	B	B	B	B	C	C	C	C	C	C	D	D	D	D	D	D	D	D	
27.2	60	A	A	A	A	B	B	B	B	B	B	C	C	C	C	C	C	C	C	C	D	D	
18.1	40	A	A	A	A	A	A	A	A	B	B	B	B	B	B	B	B	C	C	C	C	C	
9.0	20	A	A	A	A	A	A	A	A	A	A	A	A	A	A	A	A	A	A	A	A	B	
DOOR WIDTH	in.	12	15	18	21	24	27	30	33	36	39	42	45	48	51	54	57	60	63	66	69	72	
	cm.	30.5	38.1	45.7	53.3	61.0	68.6	76.2	83.8	91.4	99.1	106.7	114.3	121.9	129.5	137.2	144.8	152.4	160.0	167.6	175.3	182.9	

# Walk-In Cooler Door Pull Handles

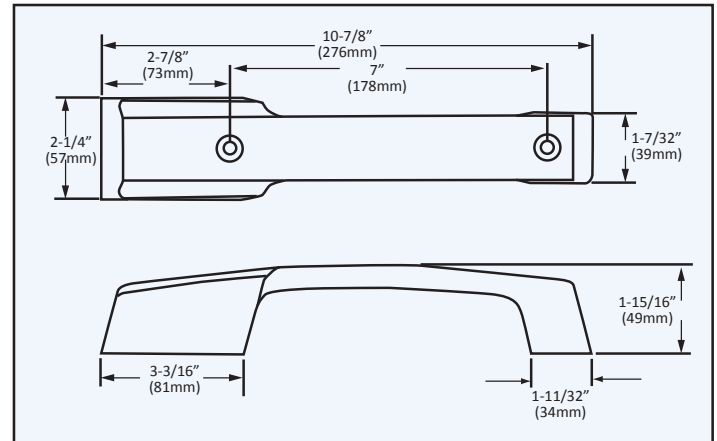


## W29 SERIES DOOR PULL HANDLES

- Heavy-duty high pressure zinc die-casting
- Satin chrome finish will not show fingerprints
- Polished chrome finish available
- Ergonomic design offers comfortable and easy door opening
- Non-handed-reversible feature for right or left hand swinging doors
- Concealed tamper-resistant mounting
- Ideal for all magnetic framed doors

REF.	MODEL NO.	DESCRIPTION	FINISH
A	W29-1000X	WITHOUT CYLINDER	SATIN CHROME
NOT SHOWN	W29-2000	WITHOUT CYLINDER	POLISHED CHROME

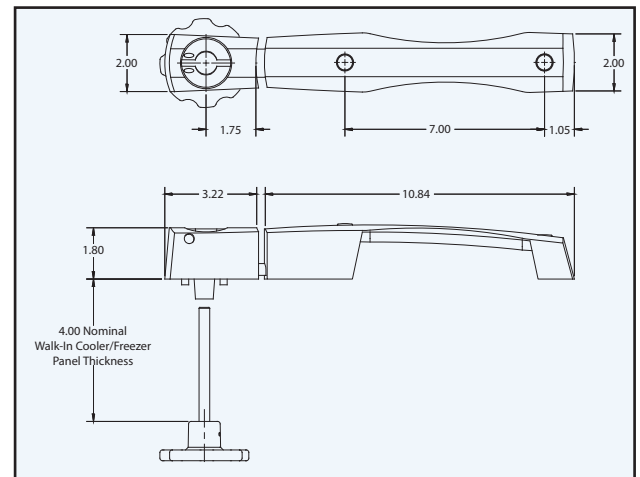
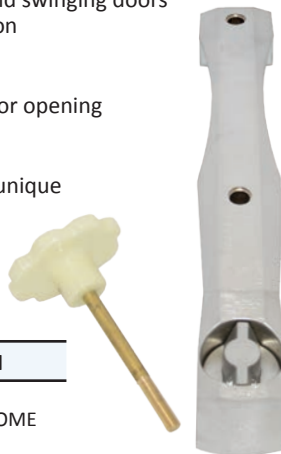
REPLACES\* KASON #1229 & 1229C WITH Component Hardware QUALITY HARDWARE



## W30 SERIES HEAVY DUTY DOOR PULL

- Non-handed-reversible design fits right or left hand swinging doors
- Heavy-duty high pressure zinc die-cast construction
- Satin chrome finish will not show fingerprints
- Available in polished or satin chrome finishes
- Ergonomic design offers comfortable and easy door opening
- Concealed tamper-resistant mounting
- Ideal for all magnetic framed doors
- Locking models include inside safety release and unique padlock feature
- Safety release sized for 4" thick panel (other sizes available upon request)
- Styling coordinated with Component Hardware W59 Series door hinges

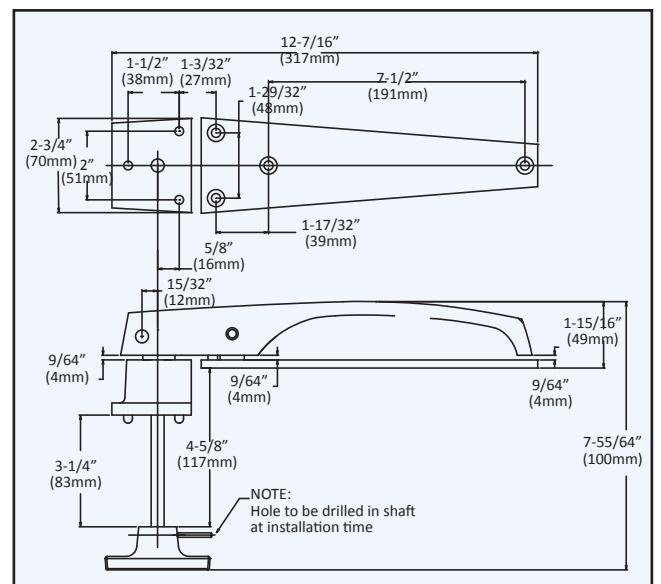
MODEL NO.	DESCRIPTION	FINISH
W30-1000	NO CYLINDER LOCK	SATIN CHROME
W30-1000-L	WITH CYLINDER LOCK	
W30-2000	NO CYLINDER LOCK	POLISHED CHROME
W30-2000-L	WITH CYLINDER LOCK	



## W31 SERIES MAGNETIC DOOR BREAKER-ACTION HANDLE

- For Refrigeration Doors with Magnetic Gaskets
- Aluminum Sand Cast Construction
- Breaker Action Promotes Easy Door Opening
- Satin Finish
- Accepts Padlock
- Complete with Inside Safety Release
- For Doors with 1-3/8" (35mm) Offset
- Inside Release Designed for 4-5/8" (117mm) Door Thickness\*

MODEL NO. W31-1000X



REPLACES\* STANDARD KEIL (#2820 & 9180) AND DENT (D-83) WITH COMPONENT HARDWARE QUALITY HARDWARE



# Walk-In Cooler Door Safety Latches



## W19 SERIES SAFETY LATCHES DESIGNED ESPECIALLY FOR WALK-IN REFRIGERATORS AND FREEZERS

- AVAILABLE IN POLISHED CHROME OR SATIN CHROME FINISH



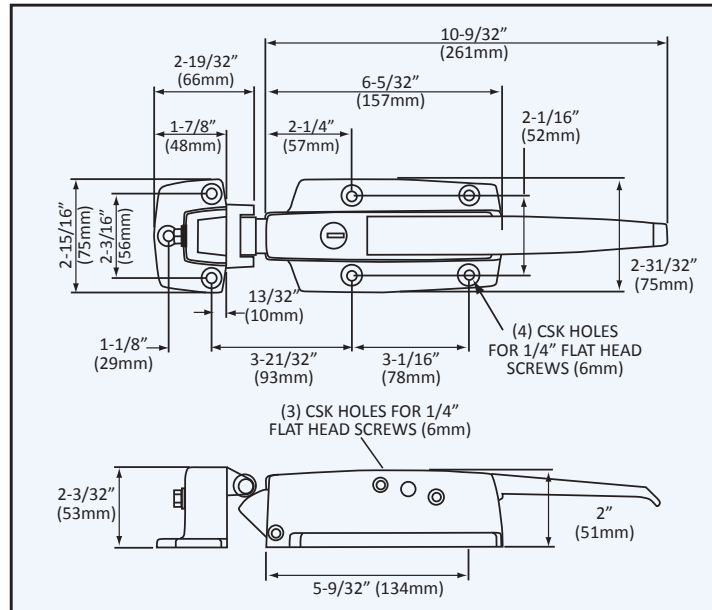
**HEAVY- DUTY CONSTRUCTION...** to provide the impact resistance required in heavy traffic areas. The latch body is constructed of reinforced die cast Zamak and furnished with a solid handle. All inner working parts and back plate are manufactured of solid stainless steel, unlike competitors models that can rust and leave unsightly stains on doors.

**TAMPER PROOF DESIGN...** eliminates pilferage of costly food stocks. Bolt cannot be retracted from the outside when latch is cylinder locked or padlocked. Yet with safety inside release mechanism occupants can safely exit even if latch is locked or padlocked.

**FRICTION FREE OPERATION...** provided by utilizing roller bolt retraction combined with roller strike action. Eliminates wear and allows doors to close smoothly and easily without slamming, while offering superb gasket compression.

**EASY LIFT HANDLE...** user friendly requires minimal hand pressure to completely retract bolt from strike. Low 1-1/2"(38mm) handle rise eliminates tugging and wrist twisting.

**EASILY ADJUSTED STRIKE ASSEMBLY...** offers variable offset adjustment permitting field adjustment for door gasket wear.

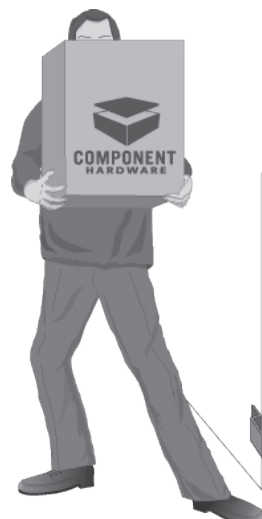
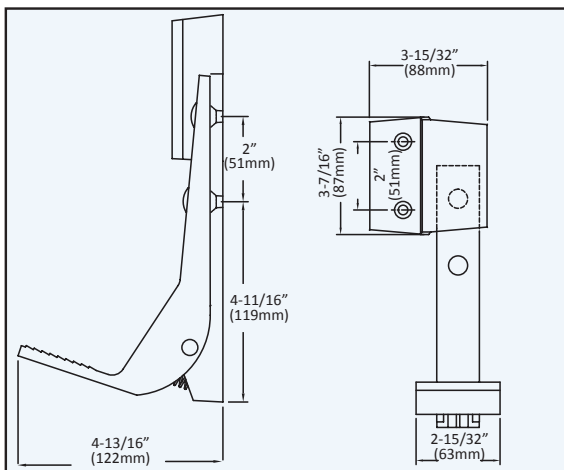


MODEL NO.	DESCRIPTION	FINISH	OFFSET
W19-1000	NO CYLINDER LOCK	POLISHED CHROME	
W19-1000-C	WITH CYLINDER LOCK	POLISHED CHROME	-1/8" TO 3/8"
W19-1000-SN	NO CYLINDER LOCK	SATIN CHROME	(-3mm TO 10mm)
W19-1000-C-SN	WITH CYLINDER LOCK	SATIN CHROME	
W19-1500	NO CYLINDER LOCK	POLISHED CHROME	3/4" TO 1-5/8"
W19-1500-C	WITH CYLINDER LOCK	POLISHED CHROME	(19mm TO 41mm)
W19-2000	NO CYLINDER LOCK	POLISHED CHROME	1-5/8" TO 2-1/2"
W19-2000-C	WITH CYLINDER LOCK	POLISHED CHROME	(41mm TO 64mm)

REPLACES\* KASON #58, 59 AND 77 WITH COMPONENT HARDWARE QUALITY HARDWARE

## FOOT TREADLE

### For Safe & Convenient Hands-Free Door Operation



- Non-skid pedal surface
- Stainless Steel pin and low friction bearings
- Reversible for right or left hand door swing
- Length-7-3/4" (197mm)
- Material-Aluminum
- Brushed Aluminum Finish
- Offset-Flush
- Screw Holes- 1/4" (6mm) Hole, 82° Countersunk



MODEL NO.  
W50-1000

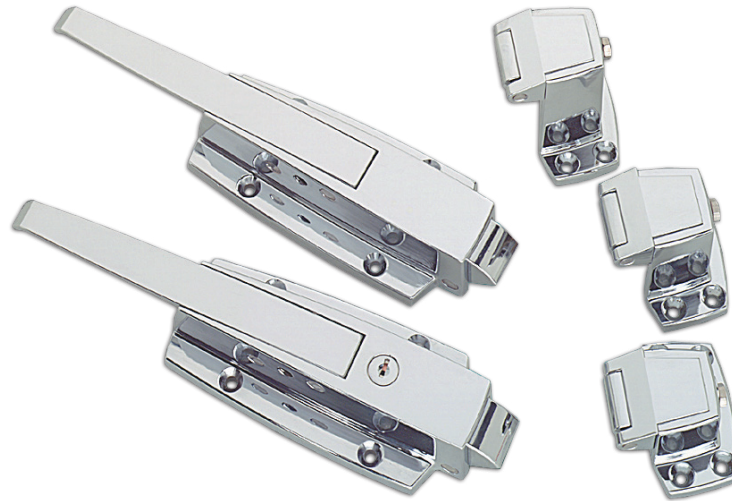
REPLACES\* STANDARD KEIL (#2890 & 9183), DENT (D-82) AND KASON (1230) WITH COMPONENT HARDWARE QUALITY HARDWARE

# Heavy-Duty Walk-In Door Safety Latches

## W38 SERIES SAFETY LATCHES DESIGNED ESPECIALLY FOR WALK-IN REFRIGERATORS AND FREEZERS

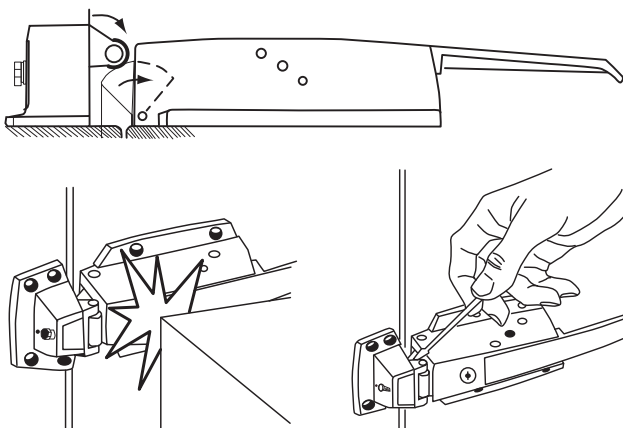


- AVAILABLE IN POLISHED CHROME OR SATIN CHROME FINISH



**SUPER HEAVY-DUTY CONSTRUCTION...** and large body profile latch is designed to withstand the most rigorous of commercial kitchen or cold room environments. Latch handle is produced of lifetime **SOLID FORGED BRASS** construction. All inner working parts and back plate are manufactured of solid stainless steel which provide a rugged, smooth and rust-free operation.

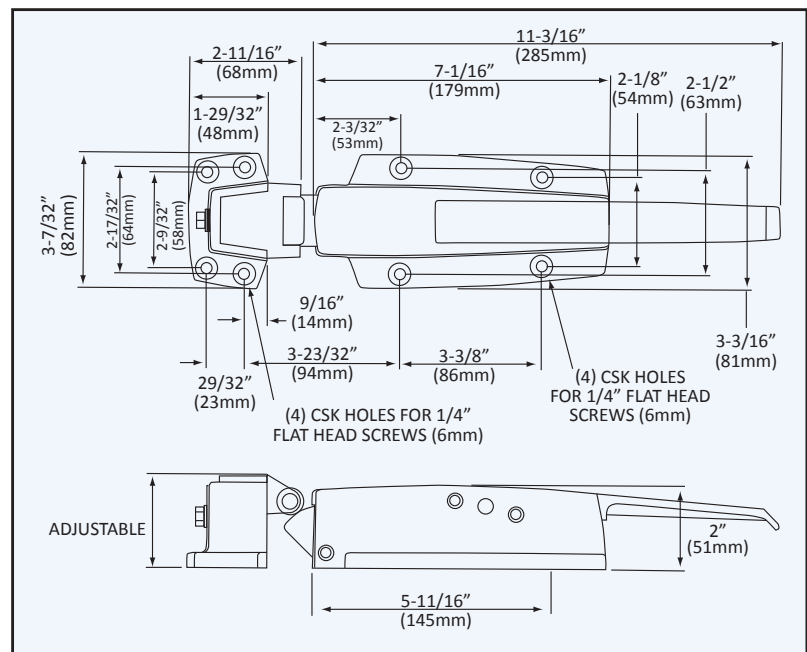
- EASY LIFT HANDLE
- HEAVY- DUTY CONSTRUCTION
- FRICTION-FREE OPERATION
- EASILY ADJUSTED STRIKE ASSEMBLY
- TAMPER PROOF DESIGN



MODEL NO.	DESCRIPTION	FINISH	OFFSET
W38-1000	NO CYLINDER LOCK	POLISHED CHROME	
W38-1000-C	WITH CYLINDER LOCK	POLISHED CHROME	-1/8" TO 3/8" (-3mm TO 10mm)
W38-1000-SN	NO CYLINDER LOCK	SATIN CHROME	
W38-1000-C-SN*	WITH CYLINDER LOCK	SATIN CHROME	
W38-1500	NO CYLINDER LOCK	POLISHED CHROME	
W38-1500-C	WITH CYLINDER LOCK	POLISHED CHROME	3/4" TO 1-5/8" (19mm TO 41mm)
W38-1500-SN	NO CYLINDER LOCK	SATIN CHROME	
W38-1500-C-SN*	WITH CYLINDER LOCK	SATIN CHROME	
W38-2000	NO CYLINDER LOCK	POLISHED CHROME	1-5/8" TO 2-1/2" (41mm TO 64mm)
W38-2000-C	WITH CYLINDER LOCK	POLISHED CHROME	

REPLACES\* KASON #56 WITH COMPONENT HARDWARE QUALITY HARDWARE

\*NOTE: Non-stock item



# Inside Safety Releases



## COMPONENT

### W28 SERIES INSIDE SAFETY RELEASES FOR RECESSED MOUNT

- **SURFACE MOUNT AND FLUSH MOUNT STYLES** are available
- **GLOW-IN-THE- DARK KNOB** meets all industry safety standards
- Durable **SOLID FIBERGLASS REINFORCED** polyester pushrod provides years of smooth, safe, frost-free operation and eliminates conductivity of cold air
- Short Stroke engineering provides **IMMEDIATE INSIDE RELEASE** even if latch is cylinder locked, padlocked or both
- **RECESSED DESIGN** protects knob from exposure to traffic of heavy crates, hand trucks and loading vehicles
- **ALL STANDARD DOOR THICKNESSES** are available

#### SPECIFICATIONS

**KNOB:** GLOW-IN-THE-DARK SAFETY GREEN THERMOPLASTIC

**FLANGE:** GREY THERMOPLASTIC

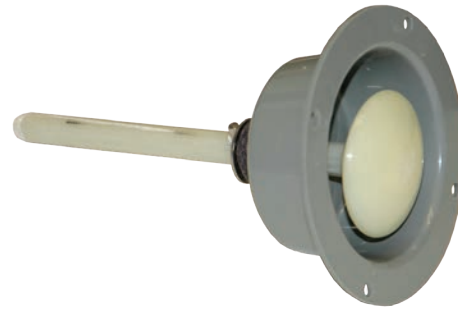
**PUSH ROD:** NON-CONDUCTIVE FIBERGLASS REINFORCED POLYESTER

**NOTE:** INSIDE RELEASES MUST BE ORDERED SEPARATELY

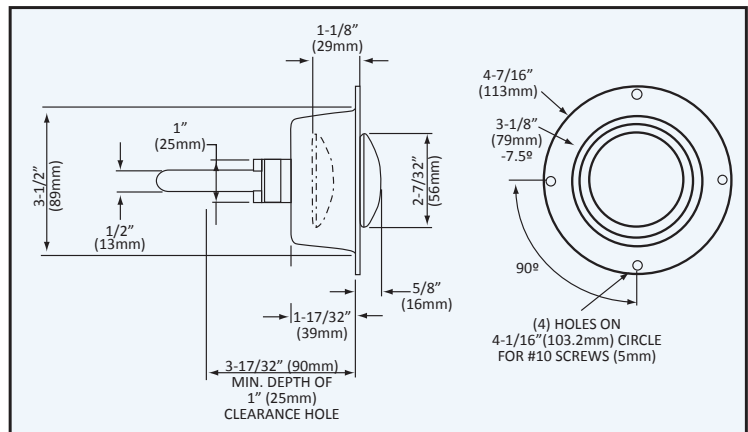
#### RECESSED MOUNT

MODEL NO.	DOOR THICKNESS
W28-3400X	4" (102mm)
W28-3800X	8" (203mm)

REPLACES\* KASON #489 WITH Component Hardware **QUALITY HARDWARE**



ADDITIONAL ROD SIZES FOR VARYING DOOR THICKNESSES AVAILABLE ON APPLICATION

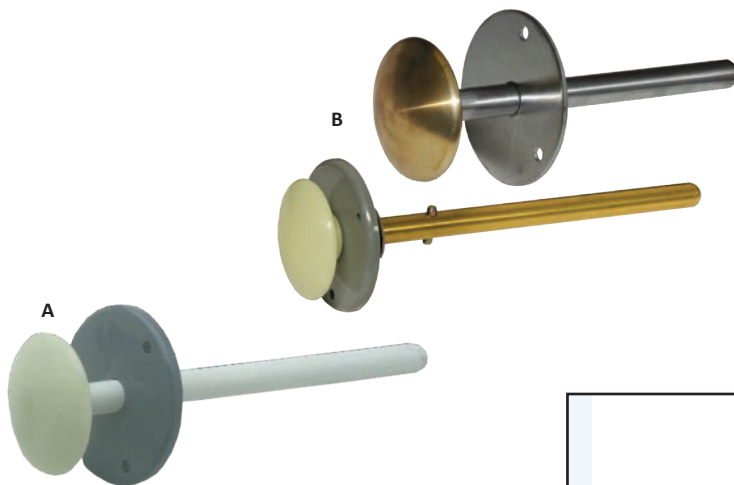


### W28 SERIES INSIDE SAFETY RELEASES FOR SURFACE MOUNT

#### STAINLESS STEEL INSIDE RELEASES AND BRASS RODS (SPECIAL ORDER)

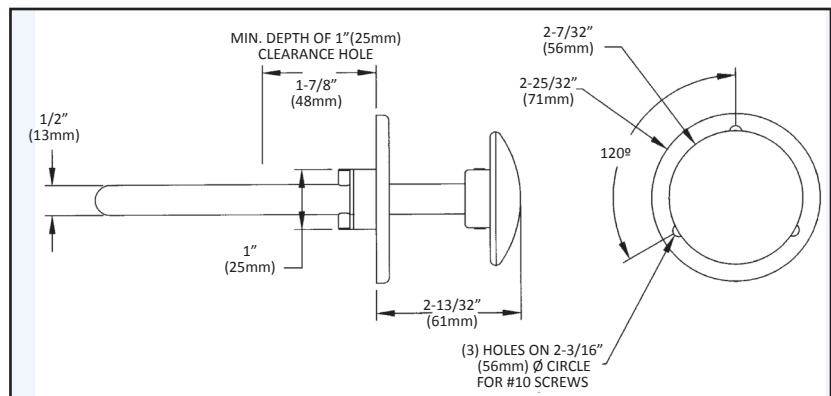
MODEL NO.	DESCRIPTION
W28-2400-SSX	S/S ROD FOR 4" (102mm) WALL WITH BRASS KNOB
W28-2300-SSX	S/S ROD FOR 3" (76mm) WALL WITH BRASS KNOB
W28-2605	BRASS ROD FOR 6" (152mm) WALL

REPLACES\* KASON #487, 481 AND 482 WITH COMPONENT HARDWARE **QUALITY HARDWARE**



#### SURFACE MOUNT

MODEL NO.	DOOR THICKNESS
W28-2325X	3-1/4" (83mm)
W28-2400X	4" (102mm)
W28-2600X	6" (152mm)
W28-2800X	8" (203mm)





## PANIC BAR W/INSIDE SAFETY RELEASE

**MODEL NO. W28-1000**

FOR 3" DOOR

**MODEL NO. W28-1200**

FOR 4" DOOR



- Sturdy aluminum construction
- Glow-in-the-dark reflective strip
- For use with Component Hardware W19, W38 and W99 Series refrigeration safety latches
- Glow-in-the-dark reflective strip
- Reversible for left and right hand door applications
- Sturdy aluminum construction
- Supplied with stainless steel push rod

## PADLOCK HASP WITH INSIDE SAFETY RELEASE

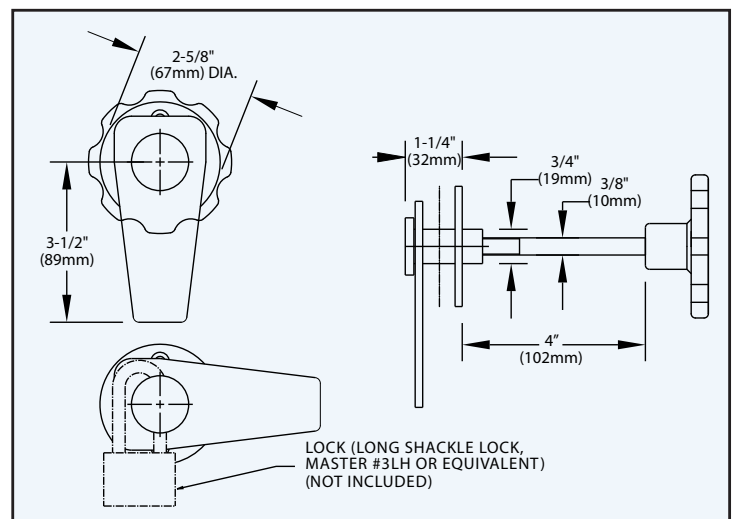
**MODEL NO. W29-5000-4X**

- For 4" (102mm) wall and flush door
- External parts are 300 series stainless steel with satin finish
- Plate can be locked in lock/open as well as locked/closed position

- Concealed mounting holes utilize #10 or #12 flat head screw
- Plastic glow in the dark inside release knob on solid brass rod



Simple padlocking hasp secures any walk-in cooler or freezer door.

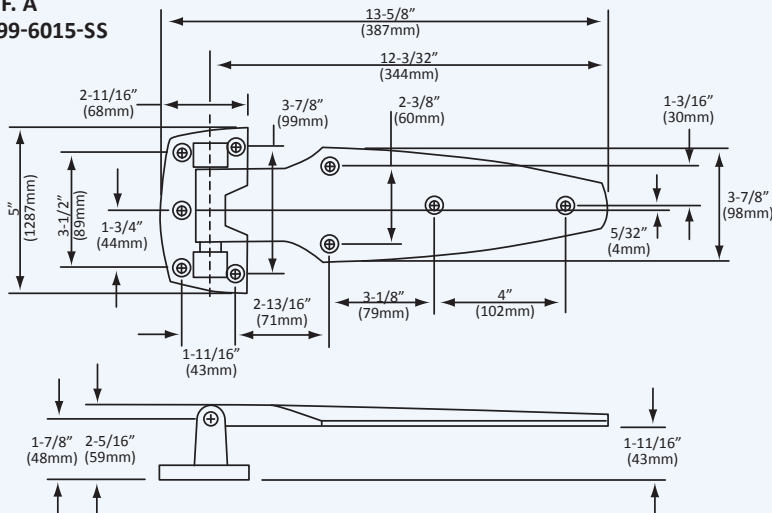


# Solid Stainless Steel Investment Cast Hinges



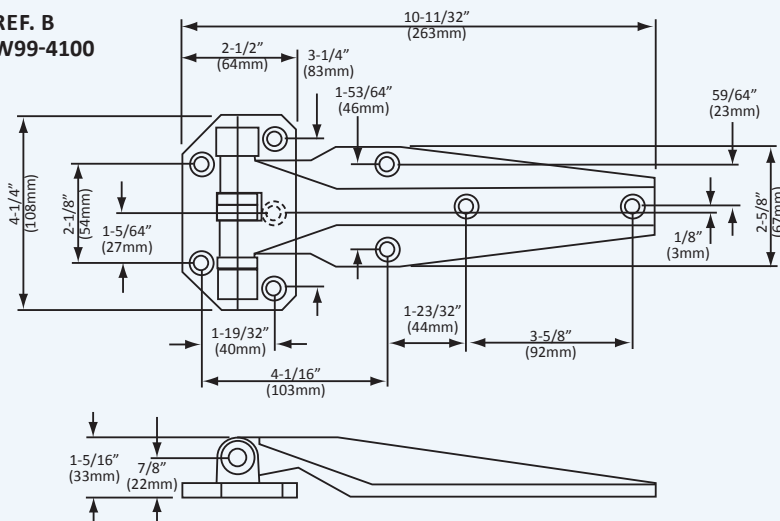
## W99 SERIES INVESTMENT CAST HINGES

REF. A  
W99-6015-SS



- The **ONLY ALL STAINLESS HINGE** available in today's market
- Field Reversible
- Solid stainless steel construction throughout
- Ideal for highly corrosive and humid environments
- Ideal for marine applications, outside cold rooms and commercial refrigerated truck bodies
- Rugged heavy-duty lifetime construction
- Tamper-proof design

REF. B  
W99-4100



MODEL NO.	DESCRIPTION
W99-6015-SS HINGE	1-5/8" (41mm) OFFSET
W99-4100-SSRH HINGE	RIGHT HAND FLUSH
W99-4100-SSLH HINGE	LEFT HAND FLUSH

W99-4100 REPLACES\* KASON #1241, W99-6015-SS and DENT (D1P) WITH COMPONENT HARDWARE QUALITY HARDWARE

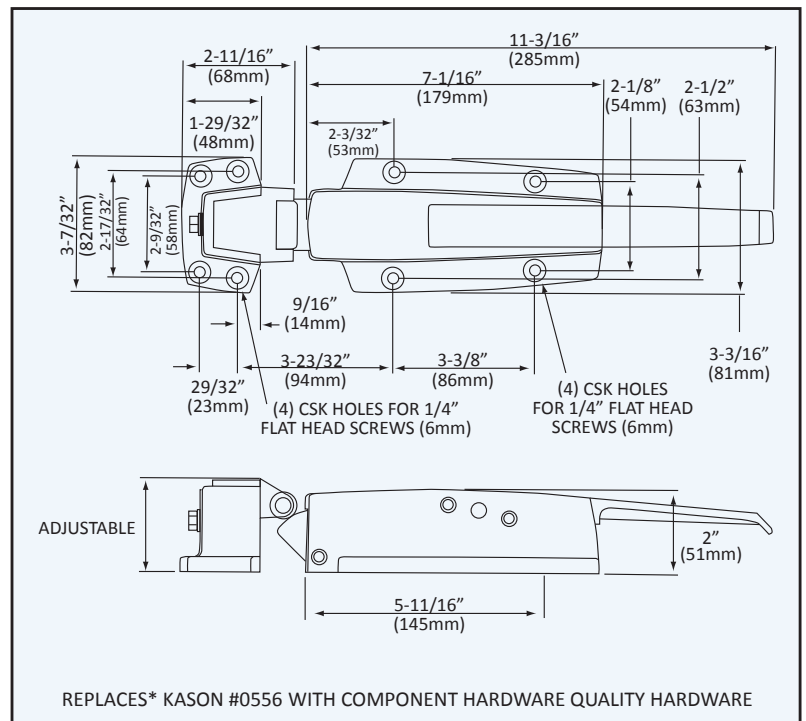
# Solid Stainless Steel Investment Cast Latches



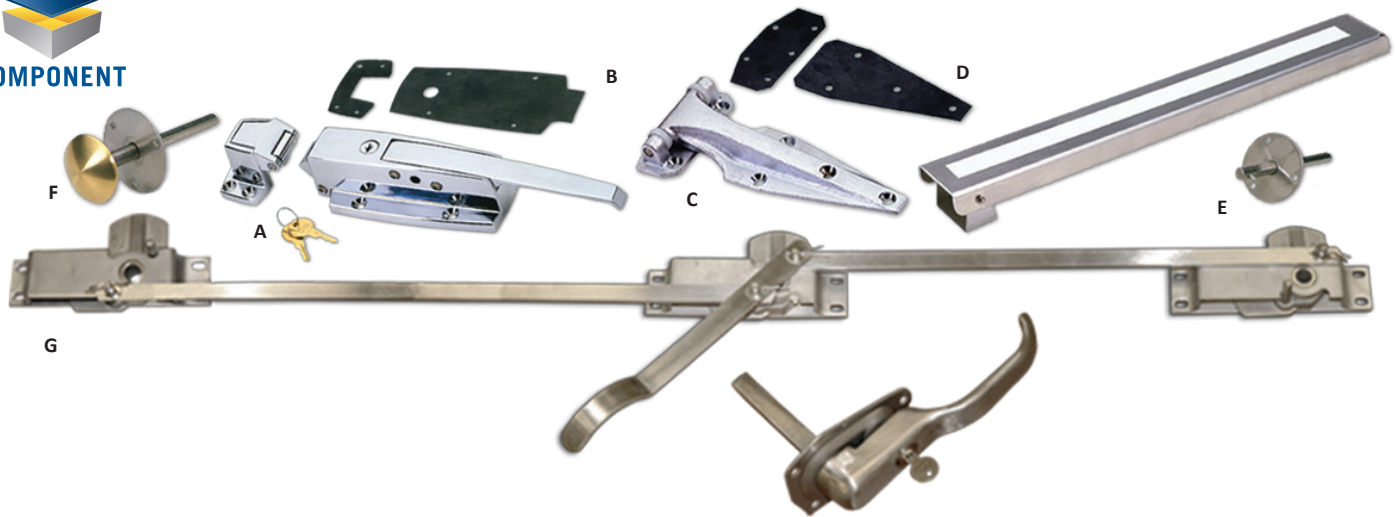
## W99 SERIES INVESTMENT CAST SAFETY LATCHES

- The **ONLY ALL STAINLESS LATCH** available in today's market
- Solid stainless steel construction throughout
- Ideal for highly corrosive and humid environments
- Ideal for marine applications, outside cold rooms and commercial refrigerated truck bodies
- Rugged heavy-duty lifetime construction
- Tamper-proof design
- Padlock feature on all latches for maximum security
- Cylinder lock model also available

MODEL NO.	DESCRIPTION
W99-3800-SS LATCH	FLUSH TO 3/8" OFFSET
W99-3800-SS-C	LATCH WITH LOCK
W99-3815-SS LATCH	3/4" TO 1-5/8" OFFSET
W99-3815-SS-C	LATCH WITH LOCK
W99-3820-SS LATCH	1-5/8" TO 2-1/2" OFFSET



# Hardware Designed Specifically for Outdoor Structures



## SPECIALTY HARDWARE FOR OUTDOOR APPLICATION

- IDEAL FOR HIGHLY CORROSIVE AND HUMID ENVIRONMENTS • IDEAL FOR MARINE APPLICATIONS, OUTSIDE COLD ROOMS AND COMMERCIAL REFRIGERATED TRUCK BODIES • RUGGED HEAVY-DUTY LIFETIME CONSTRUCTION • TAMPER-PROOF DESIGNS

### ALSO AVAILABLE AS COMPLETE ASSEMBLIES:

REF.	MODEL NO.	DESCRIPTION
A	W38-1000-C	LATCH AND STRIKE
B	W99-0100-L	LATCH GASKET
C	W99-2001	HINGE, CHROME PLATED BRASS, FLUSH w/BRONZE BUSHINGS
Not Shown	W99-2063	HINGE, CHROME PLATED BRASS, 5/8" OFFSET w/BRONZE BUSHINGS
D	W99-0100-H	HINGE GASKET
E	W28-1000	PANIC BAR W/INSIDE RELEASE
E	W28-1000	STAINLESS STEEL INSIDE RELEASE FOR 3" (76 mm) DOOR THICKNESS
Not Shown	W28-2215-SSX	STAINLESS STEEL INSIDE RELEASE FOR 2.15" (55 mm) DOOR THICKNESS
G	W37-3000-SS*	STAINLESS STEEL THREE POINT LATCH

\*NOT NSF LISTED

W38-1000-C-GE	WALK-IN LATCH KIT INCLUDES FLUSH MOUNT POLISHED CHROME LATCH W/CYLINDER LOCK, GASKET SET & S/S INSIDE RELEASE FOR 3" DOOR THICKNESS
W38-1600LSSGE	WALK-IN LATCH KIT INCLUDES FLUSH MOUNT S/S LATCH W/ CYLINDER LOCK, GASKET SET & INSIDE RELEASE
W38-4216LSSGE	WALK-IN LATCH KIT INCLUDES 2.43" OFFSET S/S LATCH W/ CYLINDER LOCK, GASKET SET & S/S INSIDE RELEASE
W38-6000-C-GE	WALK-IN LATCH KIT INCLUDES FLUSH MOUNT POLISHED CHROME LATCH W/CYLINDER LOCK, GASKET SET & PANIC BAR INSIDE RELEASE
W99-2001-GE	HINGE KIT CHROME PLATED BRASS, FLUSH MOUNT, GASKETS INCLUDED w/BRONZE BUSHINGS
W99-2063-GE	HINGE KIT CHROME PLATED BRASS, 5/8" OFFSET, INCLUDES GASKETS w/BRONZE BUSHINGS

### W38 SERIES HEAVY-DUTY WALK-IN DOOR SAFETY LATCHES

- Available in polished chrome or satin chrome finish • Super heavy-duty construction and large body profile latch designed to withstand the most rigorous conditions • Handle is solid forged brass, inner working parts and back plate are solid stainless steel for smooth and rust-free operation

REPLACES\* KASON #56 WITH COMPONENT HARDWARE QUALITY HARDWARE

### W99 SERIES HEAVY-DUTY HINGE

- Available in chrome plated brass • Available in flush or 5/8" (16mm) offset
- Heavy-duty construction to withstand rigorous conditions • Models available with OILITE® bronze bushings for added strength & durability

### W28 SERIES STAINLESS STEEL INSIDE RELEASE W28-1000 PANIC BAR W/INSIDE RELEASE

- Sturdy aluminum construction • Glow-in-the-dark reflective strip

### W28-2300-SSX STAINLESS STEEL INSIDE RELEASE

- For 3" (76 mm) door thickness • Additional sizes for varying door thicknesses available on application

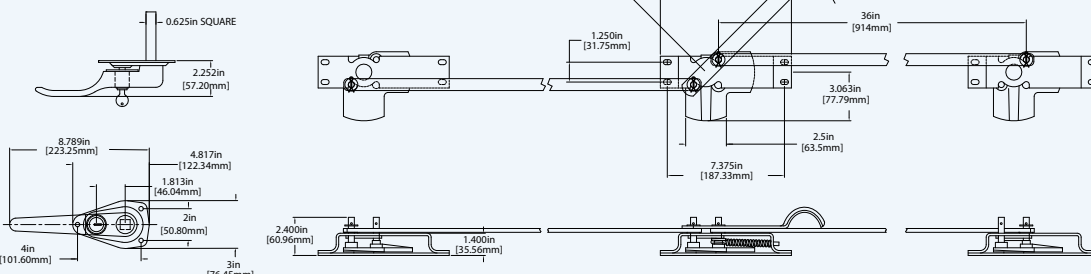
REPLACES\* KASON #481 WITH COMPONENT HARDWARE QUALITY HARDWARE

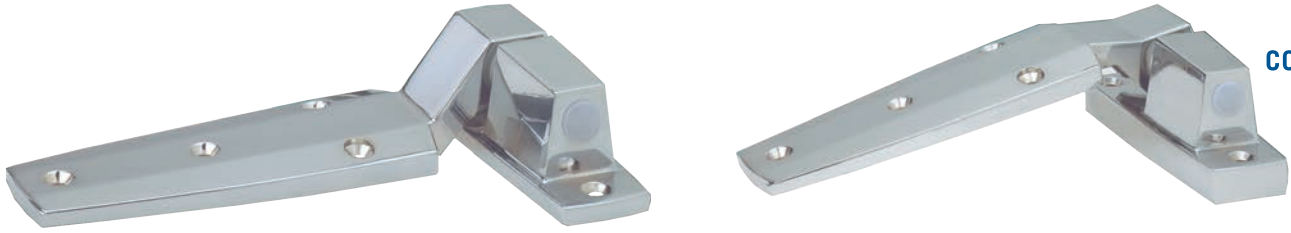
### W37-3000-SS STAINLESS STEEL THREE POINT LATCH

- Positive dead bolt locking • Holds door closed in 3 places— top, center & bottom to minimize leakage and save energy • Strongest latch made • Spring loaded over-center latching • Positive inside release mechanism

### STAINLESS STEEL THREE POINT LATCH

MODEL NO.  
W37-3000-SS





## W60 SERIES LIFT-OFF HINGE WITH CAM RISE ACTION

### LONG STRAP POLISHED CHROME FINISH

MODEL NO.	OFFSET
W60-1000	FLUSH
W60-1012	1/8" (3mm)
W60-1025	1/4" (6mm)
W60-1037	3/8" (10mm)
W60-1112	1-1/8" (29mm)
W60-1125	1-1/4" (32mm)
W60-1137	1-3/8" (35mm)
W60-1150	1-1/2" (38mm)
W60-1162	1-5/8" (41mm)
W60-1175	1-3/4" (45mm)
W60-1187	1-7/8" (48mm)
W60-1200	2" (51mm)

REPLACES\* KASON #1245 AND STANDARD KEIL #2860  
WITH Component Hardware QUALITY HARDWARE

### LONG STRAP SATIN CHROME FINISH

W60-2000	FLUSH
W60-2025	1/4" (6mm)
W60-2112	1-1/8" (29mm)
W60-2137	1-3/8" (35mm)

### SHORT STRAP POLISHED CHROME FINISH

W60-1000-S	FLUSH
W60-1012-S	1/8" (3mm)
W60-1025-S	1/4" (6mm)
W60-1037-S	3/8" (10mm)

### COORDINATED STYLING

Design coordinated with clean, unobtrusive lines to aesthetically complement the **W19 AND W38 SERIES EASY ACTION SAFETY LATCH** or other contemporary breaker hardware, latches or pulls.

### REVERSIBLE

Can be utilized for any right or left hand door application. Conversion is easily accomplished without tools.

### UNIQUE CAM ACTION

Contains self-lubricating nylon and Delrin cam rise components to provide **GLIDE-ACTION** door operation. These components reduce door sweep gasket wear regardless of floor irregularity and provide constant overclose pressure against the door gasket assuring a positive seal. A **HOLD-OPEN** feature is built into the cam allowing the door to remain open at 140°. The door will automatically return to a closed position if opened less than 140°.

### LIFT-OFF CAPABILITY

Doors can be removed quickly without tools or hinge disassembly. This allows for knockdown shipment and eliminates costly on-site installation and service time.

### DURABLE

Constructed of die-cast Zamak with built-in structural reinforcing ribs for extraordinary strength and years of trouble-free operation.

### ALL TYPE CONSTRUCTION

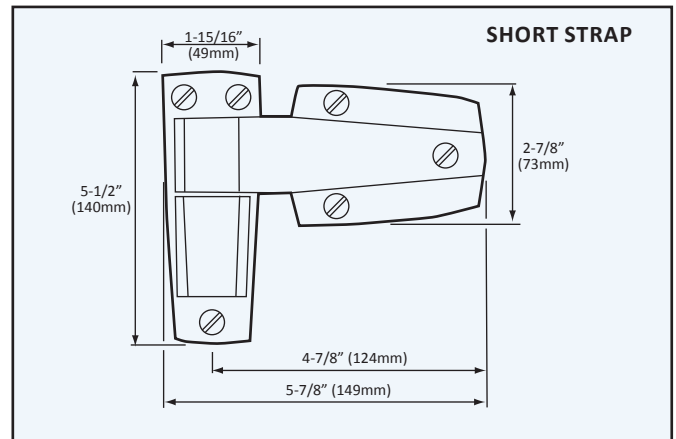
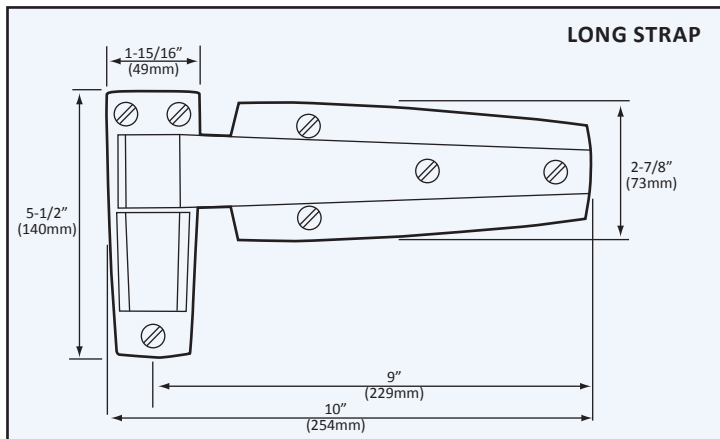
This series is designed to meet the universal requirements of all types of cooler construction especially foam.

### UNIVERSAL MOUNTING HOLES

Allows REPLACEMENT\* with all competitors models without redrilling or reinforcing.

### SPECIFICATIONS

**OFFSET:** Flush thru 2" (51mm)  
**FINISH:** Polished Chrome or Satin Chrome Finish  
**MATERIAL:** High pressure die cast Zamak  
**MOUNTING HOLES:** Drilled and countersunk for #14 screws (6mm)





# Power Spring Conversion Cartridge Kit



COMPONENT

## POWER SPRING CONVERSION CARTRIDGE KIT

**MODEL NO. W62-0001 Polished Chrome Finish**

**MODEL NO. W62-2001 Satin Chrome Finish**

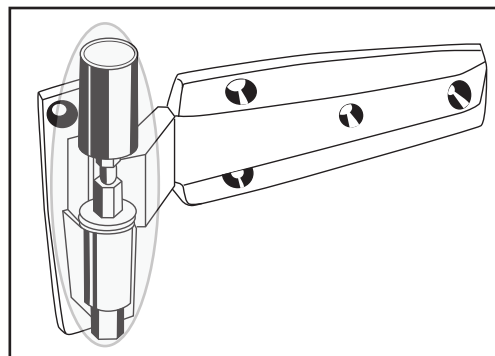
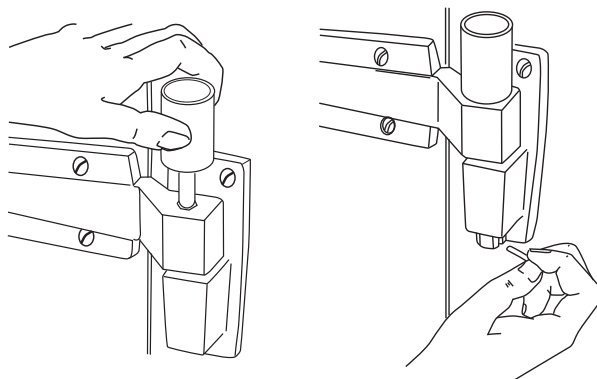
- ACCELERATES DOOR CLOSING
- INCREASES DOOR PRESSURE
- EASY INSTALLATION
- REDUCED INVENTORY

The energy saving power spring conversion cartridge is designed for easy installation into the W60 Series Lift-off Hinge. It provides increased door speed closure and maintains constant gasket pressure to eliminate refrigerated air loss. Unlike competitor's spring hinges, this optional cartridge kit can be simply added at any time to the W60 Series Lift-off Hinge eliminating costly inventories.

The cartridge kit contains a heavy duty chrome vanadium spring to assure years of trouble-free operation. The assembly may be used for either left or right hand doors, permitting reduced inventory for both hinges and conversion kits. When required, the cartridge may be easily disengaged for door removal.

**Note:** This conversion cartridge eliminates the lift-off capability of the W60 SERIES LIFT-OFF HINGE. REPLACES\* KASON #1248 AND STANDARD-KEIL #2862 WITH COMPONENT HARDWARE QUALITY HARDWARE

### EASY INSTALLATION



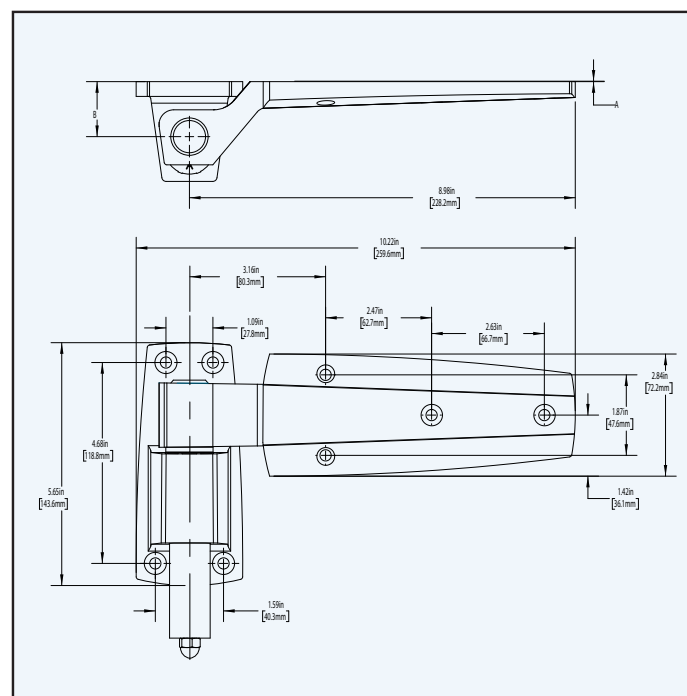
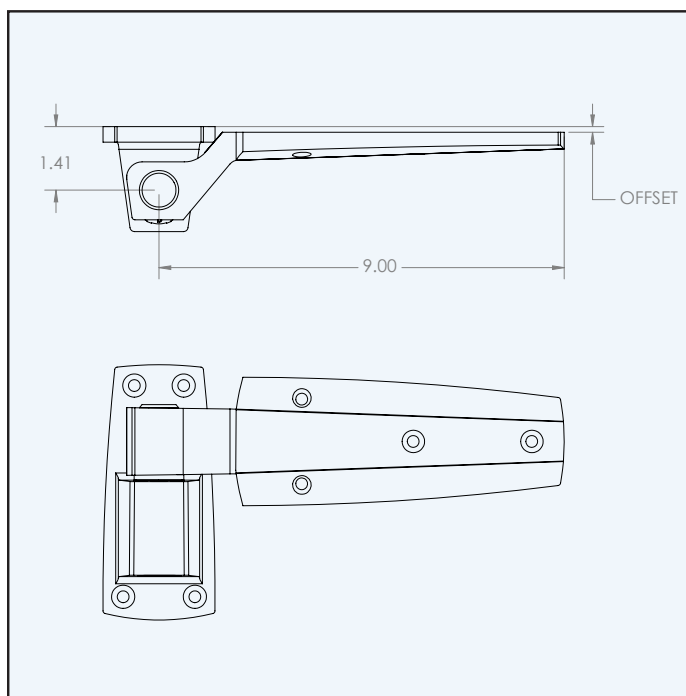
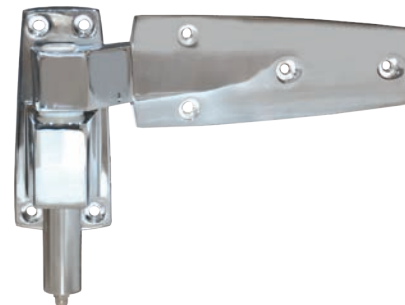
## HEAVY-DUTY CAM-RISE HINGE

**MODEL NO. W77-1375 1-3/8" Offset**

**MODEL NO. W77-1625 1-5/8" Offset**

- For cold storage, supermarket and other heavy-duty walk-in applications
- Reversible for left or right-hand doors without disassembly
- Self-closing cam-rise action
- Heavy-duty zinc-plated steel strap with satin finish
- Black epoxy-coated die cast flange
- Drilled for 3/8" mounting hardware
- Other offsets available upon application

# Heavy Duty Walk-In Door Hinges



## W61 SERIES - HINGE HEAVY DUTY WALK-IN COOLER/FREEZER

### FLEXIBLE DESIGN

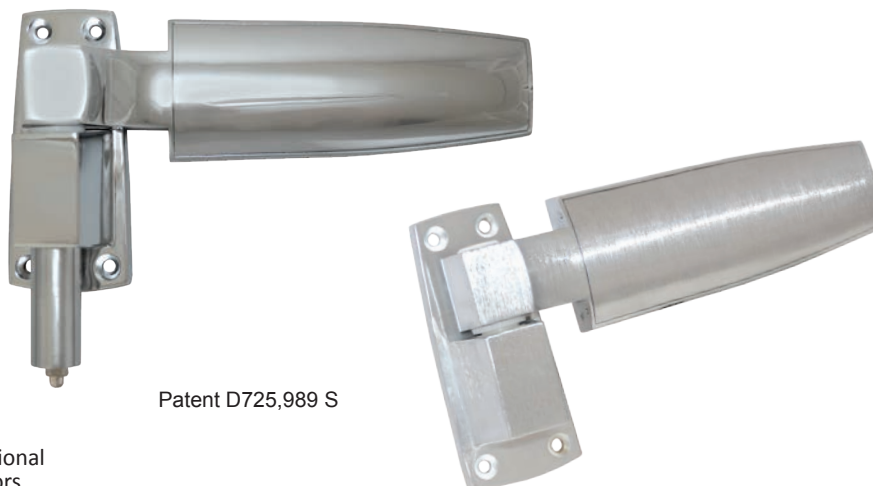
- Easily converted from left to right hand swing without tools
- Lift-off capability - doors can be removed quickly without tools or hinge disassembly
- Available in polished chrome or satin chrome finish
- Universal mounting holes allow replacement with all competitors' models without redrilling
- Styling coordinated with Component Hardware W30 Series door pulls

### UNIQUE CAM ACTION

- Self-lubricating nylon and Delrin cam rise reduce door sweep gasket wear
- Provides constant overclose pressure against door gasket to ensure a positive seal
- Built-in hold open feature allows door to remain open at 140°
- Door automatically returns to a closed position if opened less than 140°

WITHOUT BUILT-IN SPRING		WITH BUILT-IN SPRING		A	B
MODEL NO. POLISHED CHROME	MODEL NO. SATIN CHROME	MODEL NO. POLISHED CHROME	MODEL NO. SATIN CHROME		
W61-1000	W61-2000	W61-3000	W61-4000	FLUSH	1.28" (32.5mm)
W61-1012	W61-2012	W61-3012	W61-4012	0.12" (3.1mm)	1.41" (35.8mm)
W61-1025	W61-2025	W61-3025	W61-4025	0.25" (6.4mm)	1.53" (38.9mm)
W61-1037	W61-2037	W61-3037	W61-4037	0.38" (9.7mm)	1.66" (42.2mm)
W61-1112	W61-2112	W61-3112	W61-4112	1.12" (28.5mm)	1.28" (32.5mm)
W61-1125	W61-2125	W61-3125	W61-4125	1.25" (31.8mm)	1.41" (35.8mm)
W61-1137	W61-2137	W61-3137	W61-4137	1.38" (35.1mm)	1.53" (38.9mm)
W61-1150	W61-2150	W61-3150	W61-4150	1.5" (38.1mm)	1.66" (42.2mm)
W61-1162	W61-2162	W61-3162	W61-4162	1.62" (41.2mm)	1.28" (32.5mm)
W61-1175	W61-2175	W61-3175	W61-4175	1.75" (44.5mm)	1.41" (35.8mm)
W61-1187	W61-2187	W61-3187	W61-4187	1.87" (47.5mm)	1.53" (38.9mm)
W61-1200	W61-2200	W61-3200	W61-4200	2.0" (51mm)	1.66" (42.2mm)

# Heavy Duty Non-Adjustable Walk-In Door Hinges



Patent D725,989 S

## FLEXIBLE DESIGN

- Spring assist feature provides additional closing force for use on heavier doors
- Easily converted from left to right hand swing without tools
- Lift-off capability - doors can be removed quickly without tools or hinge disassembly
- Available in Polished Chrome or Satin Chrome finish or black covers
- Removable hinge cover conceals mounting holes for clean appearance
- Hinge covers may be personalized with custom colors, logos, etc. for a distinctive look
- Universal mounting holes allow replacement with all competitors' models without redrilling
- Styling coordinated with Component Hardware W30 Series door pulls

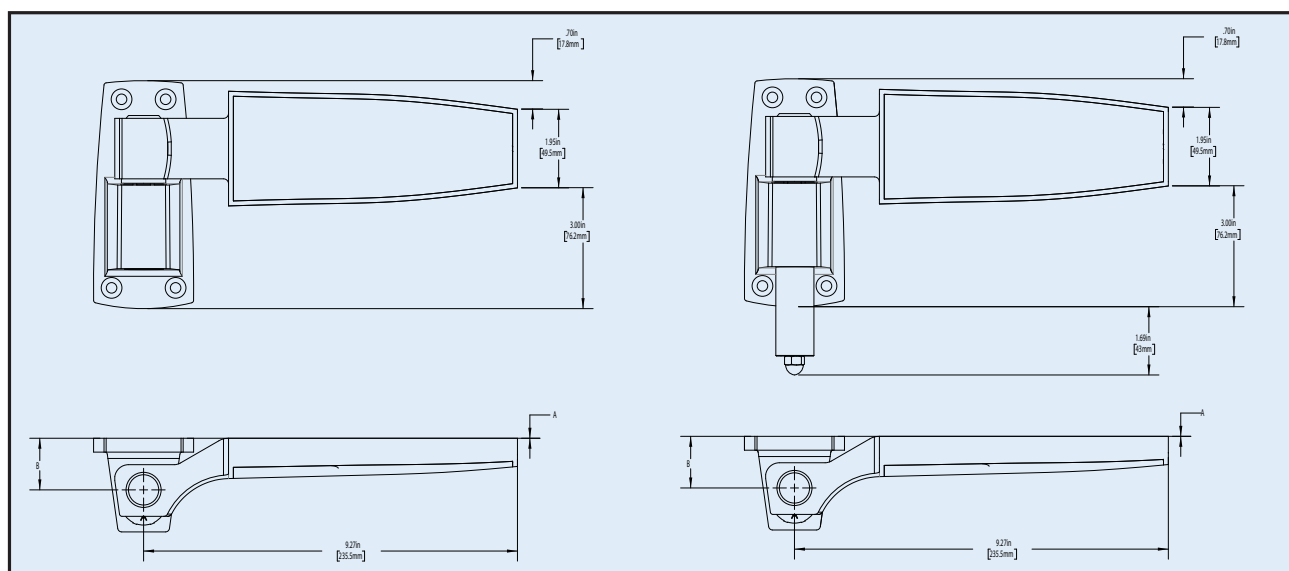
## UNIQUE CAM ACTION

- Self-lubricating nylon and Delrin cam rise reduce door sweep gasket wear
- Provides constant overclose pressure against door gasket to ensure a positive seal
- Built-in hold open feature allows door to remain open at 140°
- Door automatically returns to a closed position if opened less than 140°

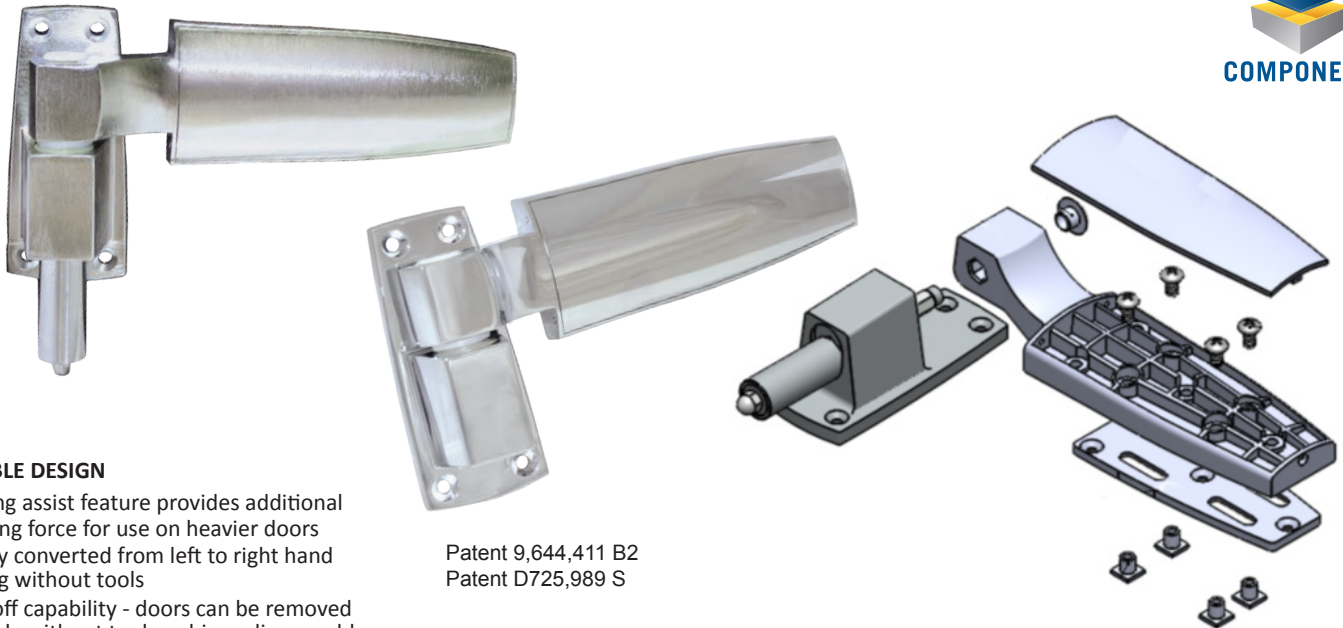
## W58 SERIES - NON-ADJUSTABLE HINGE HEAVY DUTY WALK-IN COOLER/FREEZER

WITHOUT SPRING		WITH SPRING		A	B
MODEL NO. POLISHED CHROME	MODEL NO. SATIN CHROME	MODEL NO. POLISHED CHROME	MODEL NO. SATIN CHROME		
W58-1000	W58-2000	W58-3000	W58-4000	FLUSH	1.28" (32.5mm)
W58-1012	W58-2012	W58-3012	W58-4012	0.12" (3.1mm)	1.41" (35.8mm)
W58-1025	W58-2025	W58-3025	W58-4025	0.25" (6.4mm)	1.53" (38.9mm)
W58-1037	W58-2037	W58-3037	W58-4037	0.38" (9.7mm)	1.66" (42.2mm)
W58-1112	W58-2112	W58-3112	W58-4112	1.12" (28.5mm)	1.28" (32.5mm)
W58-1125	W58-2125	W58-3125	W58-4125	1.25" (31.8mm)	1.41" (35.8mm)
W58-1137	W58-2137	W58-3137	W58-4137	1.38" (35.1mm)	1.53" (38.9mm)
W58-1150	W58-2150	W58-3150	W58-4150	1.5" (38.1mm)	1.66" (42.2mm)
W58-1162	W58-2162	W58-3162	W58-4162	1.62" (41.2mm)	1.28" (32.5mm)
W58-1175	W58-2175	W58-3175	W58-4175	1.75" (44.5mm)	1.41" (35.8mm)
W58-1187	W58-2187	W58-3187	W58-4187	1.87" (47.5mm)	1.53" (38.9mm)
W58-1200	W58-2200	W58-3200	W58-4200	2.0" (51mm)	1.66" (42.2mm)

Note: Standard hinge cover matches hinge. For black plastic cover, add "-CBLK" to model number.



# Heavy Duty Adjustable Walk-In Door Hinges



## FLEXIBLE DESIGN

- Spring assist feature provides additional closing force for use on heavier doors
- Easily converted from left to right hand swing without tools
- Lift-off capability - doors can be removed quickly without tools or hinge disassembly
- Unique internal adjusting bracket facilitates quick and easy in-place adjustment for door sag
- Available in Polished Chrome or Satin Chrome finish or black covers
- Removable hinge cover conceals mounting holes for clean appearance
- Hinge covers may be personalized with custom colors, logos, etc. for a distinctive look
- Universal mounting holes allow replacement with all competitors' models without redrilling
- Styling coordinated with Component Hardware W30 Series door pulls

## UNIQUE CAM ACTION

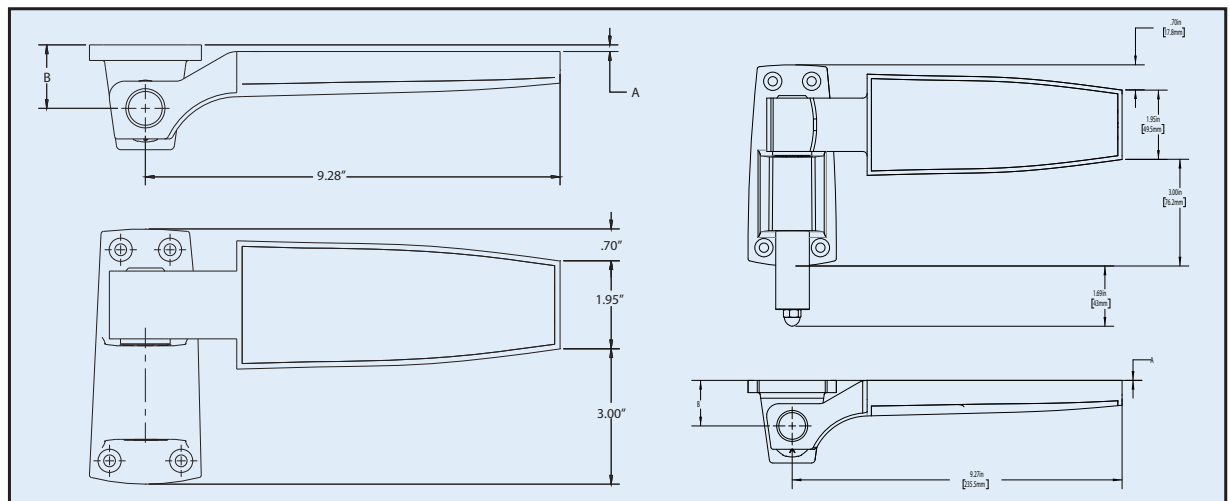
- Self-lubricating nylon and Delrin cam rise reduce door sweep gasket wear
- Provides constant overclose pressure against door gasket to ensure a positive seal
- Built-in hold open feature allows door to remain open at 140°
- Door automatically returns to a closed position if opened less than 140°

Patent 9,644,411 B2  
Patent D725,989 S

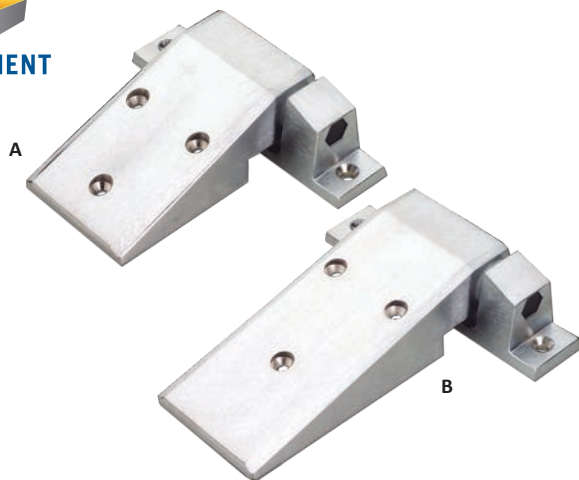
## W59 SERIES - ADJUSTABLE HINGE HEAVY DUTY WALK-IN COOLER/FREEZER

WITHOUT SPRING		WITH SPRING		A	B
MODEL NO. POLISHED CHROME	MODEL NO. SATIN CHROME	MODEL NO. POLISHED CHROME	MODEL NO. SATIN CHROME		
W59-1000	W59-2000	W59-3000	W59-4000	FLUSH	1.28" (32.5mm)
W59-1012	W59-2012	W59-3012	W59-4012	0.12" (3.1mm)	1.41" (35.8mm)
W59-1025	W59-2025	W59-3025	W59-4025	0.25" (6.4mm)	1.53" (38.9mm)
W59-1037	W59-2037	W59-3037	W59-4037	0.38" (9.7mm)	1.66" (42.2mm)
W59-1112	W59-2112	W59-3112	W59-4112	1.12" (28.5mm)	1.28" (32.5mm)
W59-1125	W59-2125	W59-3125	W59-4125	1.25" (31.8mm)	1.41" (35.8mm)
W59-1137	W59-2137	W59-3137	W59-4137	1.38" (35.1mm)	1.53" (38.9mm)
W59-1150	W59-2150	W59-3150	W59-4150	1.5" (38.1mm)	1.66" (42.2mm)
W59-1162	W59-2162	W59-3162	W59-4162	1.62" (41.2mm)	1.28" (32.5mm)
W59-1175	W59-2175	W59-3175	W59-4175	1.75" (44.5mm)	1.41" (35.8mm)
W59-1187	W59-2187	W59-3187	W59-4187	1.87" (47.5mm)	1.53" (38.9mm)
W59-1200	W59-2200	W59-3200	W59-4200	2.0" (51mm)	1.66" (42.2mm)

Note: Standard hinge cover matches hinge. For black plastic cover, add "-CBLK" to model number.



# Door Closers for Walk-In Refrigerators & Freezers



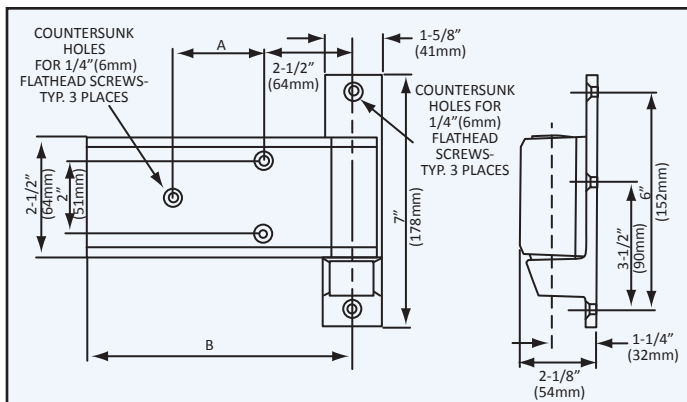
## REVERSIBLE SELF-CLOSING HINGE WITH CAM-RISE CONSTRUCTION

- Contemporary design and heavy precision die-cast construction provides durable, dependable service
- Self-closing, self-lubricating, self-rising cam provides smooth quiet closing action
- Lift-off and reversible non-handed cam design allows for easy field installation
- Special cam design feature provides a hold open dwell at 100° opening to facilitate loading and unloading of cooler
- Available in both long and short strap models
- Special satin chrome finish offers years of clean, trouble-free use while matching related hardware and cooler door coverings
- Polished chrome finish available
- Optional spring assist cartridge assembly available for accelerated and positive door closing

REF.	MODEL NO.	A	B	FINISH
A	<b>W55-1000</b> SHORT FLANGE ASS'Y, FLUSH OFFSET	1-15/16" (49mm)	5-5/16" (135mm)	SATIN CHROME
	<b>W56-1000</b> LONG FLANGE ASS'Y, FLUSH OFFSET	2-1/2" (64mm)	7-5/16" (186mm)	SATIN CHROME

**MODEL NO. W55-0001** OPTIONAL POWER SPRING KIT  
FOR USE WITH W55/56 HINGES

REPLACES\* KASON #1255 & 1256 WITH COMPONENT HARDWARE QUALITY HARDWARE



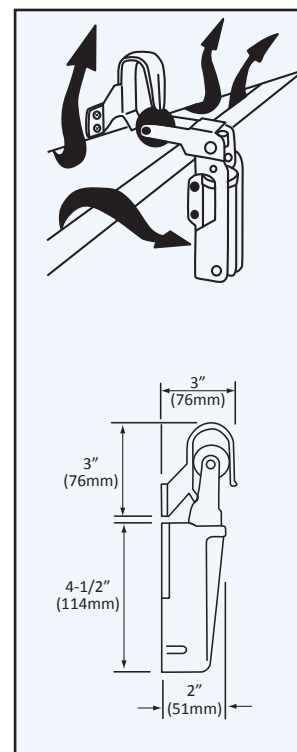
## HYDRAULIC DOOR CLOSER FOR WALK-IN REFRIGERATORS AND FREEZERS

- RUGGED CONSTRUCTION
  - DEPENDABLE ACTION
  - CONTEMPORARY DESIGN
  - ECONOMICAL
- Overcomes difficulties experienced in closing a refrigerator or freezer door against the air that compresses inside
  - Actually pulls refrigerator or freezer door closed while allowing the compressed air in the unit to slowly escape, then holds door firmly closed to eliminate loss of refrigerated air
  - Where severe temperature and pressure conditions combine to force doors open, responds to the released pressure and immediately recloses the door
  - Universal mounting holes, permit easy REPLACEMENT\* of competitive models, complete with white snap-on dust cover.

**MODEL NO. R55-1010**  
**FOR FLUSH DOORS**

**MODEL NO. R55-1020**  
**FOR 1-1/8" (29mm)**  
**OFFSET DOORS**

REPLACES\* KASON #1093 AND  
STANDARD-KEIL #2882 WITH  
COMPONENT HARDWARE  
QUALITY HARDWARE





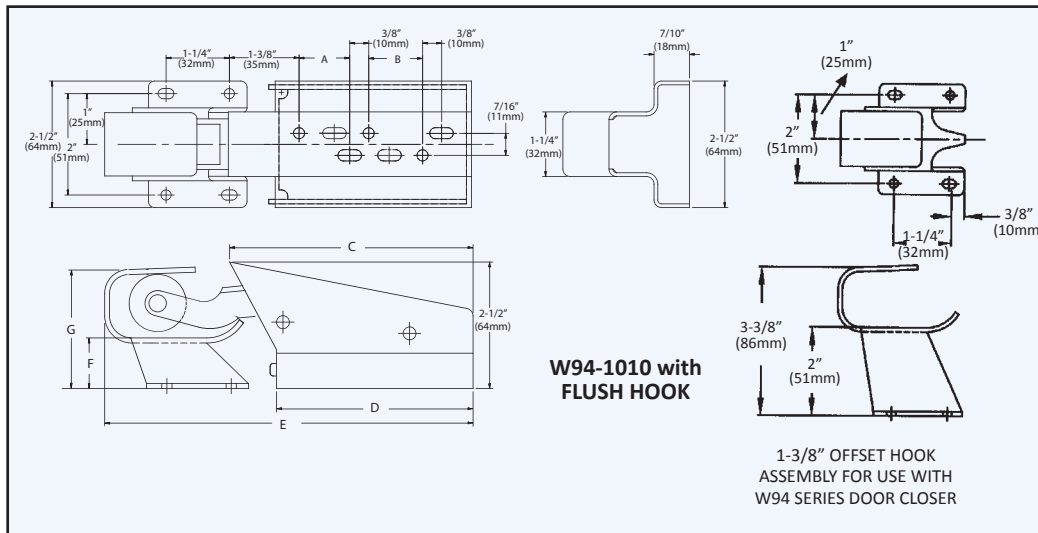
# Door Closers for Walk-In Refrigerators & Freezers



## HEAVY-DUTY HYDRAULIC SNUGGER™

**MODEL NO. W94-1010** – Flush Offset, Stainless Steel  
**MODEL NO. W94-1020** – 1-1/8" (29mm) Offset, Stainless Steel  
**MODEL NO. W94-2010** – Flush Offset, Chrome Plated Steel  
**MODEL NO. W94-2020** – 1-1/8" (29mm) Offset, Chrome Plated Steel

- Snugger's powerful gas-loaded hydraulic cylinder provides positive, smooth door closure
  - Unique cover design provides for easy installation and concealed mounting
- Cushioned rubber roller and unique spring design offers smooth, quiet, trouble-free operation
  - Available in popular flush and 1-1/8" offsets
- Interchangeability - unique concealed mounting hole pattern allows Snugger to easily replace all existing models in the field
  - Mounting template provided



### W94-1010/W94-2010

REF.	W94
A	1" (25mm)
B	2-7/16" (62mm)
C	7-7/16" (189mm)
D	6-1/2" (165mm)
E	9-15/16" (252mm)
F	1" (25mm)
G	2-3/8" (60mm)

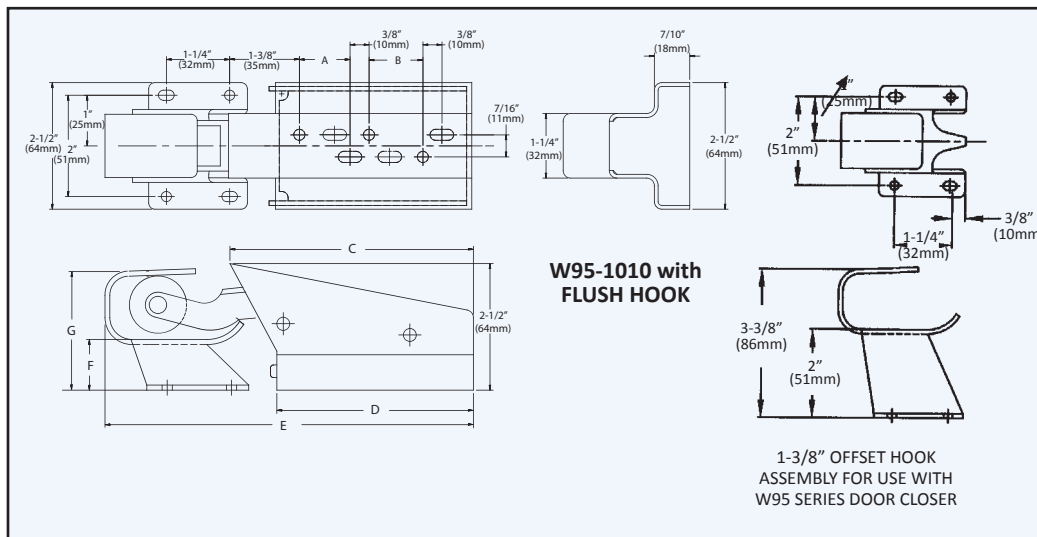
# Door Closers for Walk-In Refrigerators & Freezers



## HEAVY-DUTY SPRING ACTION CLOSE-MASTER™

**MODEL NO. W95-1010 – Flush Offset, Stainless Steel**  
**MODEL NO. W95-1020 – 1-1/8" (29mm) Offset, Stainless Steel**  
**MODEL NO. W95-1030 – 1-3/8" (35mm) Offset, Stainless Steel**  
**MODEL NO. W95-2010 – Flush Offset, Chrome Plated Steel**  
**MODEL NO. W95-2020 – 1-1/8" (29mm) Offset, Chrome Plated Steel**  
**MODEL NO. W95-2030 – 1-3/8" (35mm) Offset, Chrome Plated Steel**

- Close-Master spring action permits fast door closure and positive gasket seal, reducing energy costs
  - Concealed Mounting offers clean, tamperproof appearance
  - Unique cover design provides for easy installation and concealed mounting
- Cushioned rubber roller and unique spring design offers smooth, quiet, trouble-free operation
  - Available in popular flush and 1-1/8" offsets
- Interchangeability - unique concealed mounting hole pattern allows Close-Master to easily replace all existing models in the field
  - Re-designed back plate permits easier adjustment during installation and prevents roller arm from hitting top of door
  - Mounting template provided



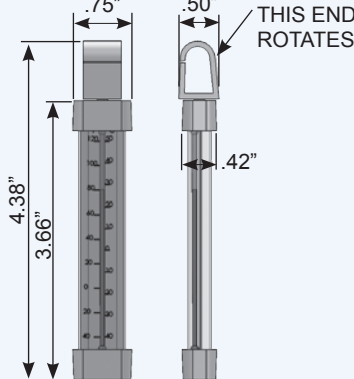
### W95-1010/W95-2010

REF.	W95
A	1" (25mm)
B	1-1/16" (27mm)
C	4-13/16" (122mm)
D	3-7/8" (98mm)
E	7-1/4" (184mm)
F	1" (25mm)
G	2-3/8" (60mm)



## REFRIGERATOR / FREEZER THERMOMETERS

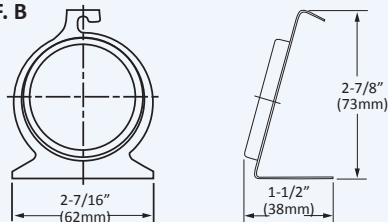
REF. A



### ECONOMICAL REFRIGERATOR / FREEZER THERMOMETER MODEL NO. T90-330

- DUAL SCALE TEMPERATURE RANGE -40° TO 120°F (-40° TO 50°C)
- NON-TOXIC SOLUTION IN COMPLETELY SEALED GLASS TUBE
- HANGS FROM SHELF OR FASTENS PERMANENTLY
- UNIQUE 360° SWIVEL MOUNTING BRACKET

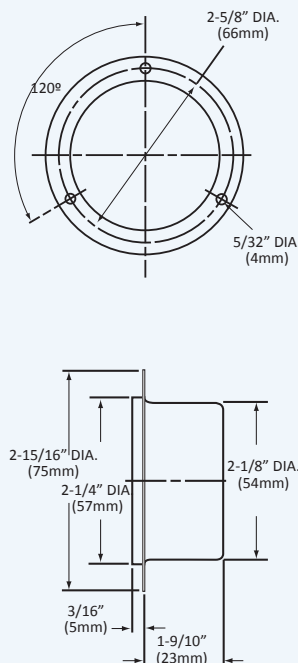
REF. B



### REFRIGERATOR / FREEZER THERMOMETER MODEL NO. T90-25HP

- STAINLESS STEEL FRAME AND BEZEL
- 2" (51mm) DIA. ROUND FACE • CAN HANG OR STAND
- DIAL HAS FOOD ZONES AND 2°F INCREMENTS
- DUAL SCALE TEMPERATURE RANGE -20° TO 80°F (-30° TO 30°C)

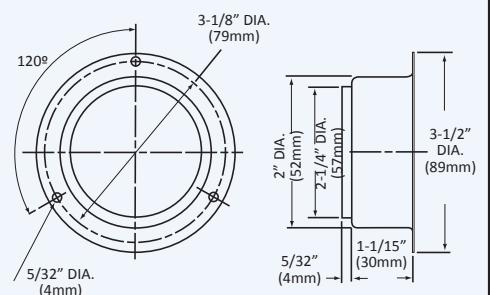
REF. C



### ELECTRONIC BATTERY PANEL MOUNT THERMOMETER MODEL NO. T90-DM120

- STAINLESS STEEL FLUSH MOUNTING REMOTE SENSOR DIGITAL THERMOMETER.
- LARGE 1/2" (13mm) LCD DISPLAY
- 39" (1m) LONG SENSOR CORD
- 1.5 VOLT BATTERY INCLUDED
- TEMPERATURE RANGE -40° TO 120°F

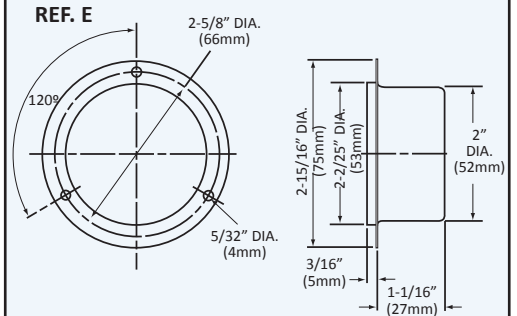
REF. D



### SURFACE MOUNT THERMOMETER MODEL NO. T90-6812

- DUAL SCALE TEMPERATURE RANGE -40° TO 65°F (-40° TO 20°C) • STAINLESS STEEL HOUSING
- 2" DIAL - 3-1/2" FLANGE • RECALIBRATEABLE
- ACCURACY + 2% • 48" CAPILLARY

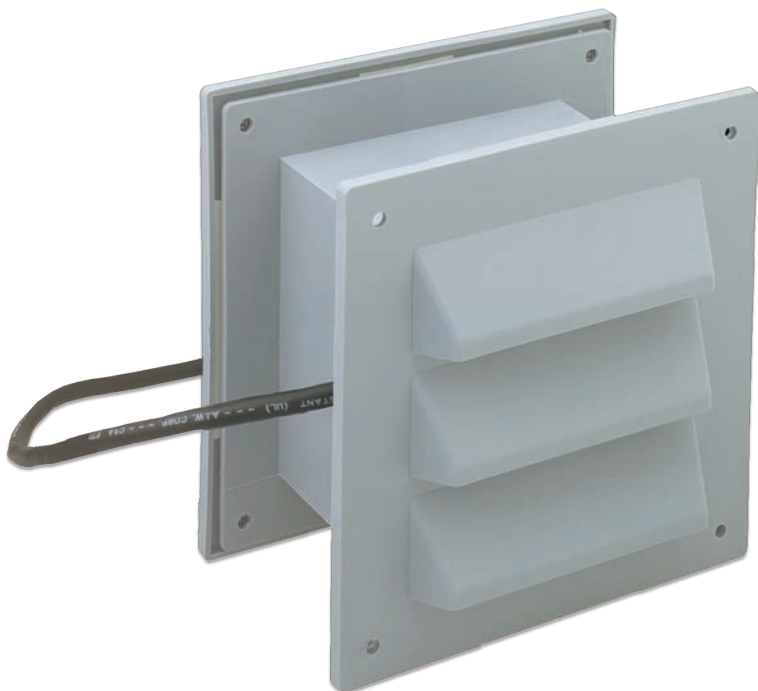
REF. E



### FLUSH FRONT RECESSED MOUNT THERMOMETER MODEL NO. T90-6142

- DUAL SCALE TEMPERATURE RANGE -40° TO 65°F (-40° TO 20°C) • STAINLESS STEEL HOUSING
- ACCURACY + 2% • 2" DIAL - 3" FLANGE
- RECALIBRATEABLE • 48" CAPILLARY

# Pressure Relief Port for Square Cut Out



## W86 SERIES VENT PORT FOR WALK-IN COOLERS AND FREEZERS

This compact unit provides maximum pressure relief venting by using lightweight, flexible riser flaps that lift with air pressure and return to a sealing position by a gravity memory action. Designed for longevity there are no springs or mechanical components to fatigue or wear out.

- Provides more venting than most competitive models
- Two-way air flow assures instant pressure balance
  - Insulated & vermin proof screened openings
  - Maintenance free • Easy to install
- Heated models provide frost-free operation which is required for all freezer applications, non-heated models are available for cooler use only • Economically priced

### W86 SERIES PRESSURE RELIEF PORT

MODEL NO.	VOLTAGE	APPLICATION
W86-1010	120V/8 Watts with Heater	Freezer
W86-1012	220V/8 Watts with Heater	Freezer
W86-1020	120V/12 Watts with Heater	Freezer
W86-1024-36*	120V/24 Watts with Heater	Freezer
W86-2010	Non-Heated	Cooler

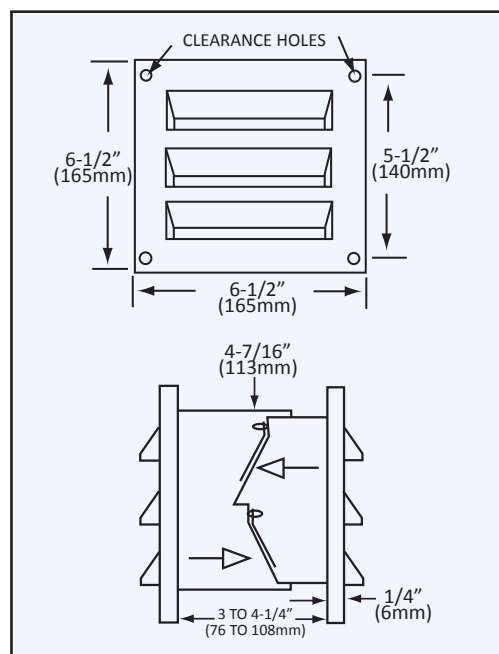
\*WIRE LEADS 36" (914mm). REPLACES\* STANDARD KEIL SERIES #2786 WITH COMPONENT HARDWARE QUALITY HARDWARE



File No. LR29496



File No. E73857

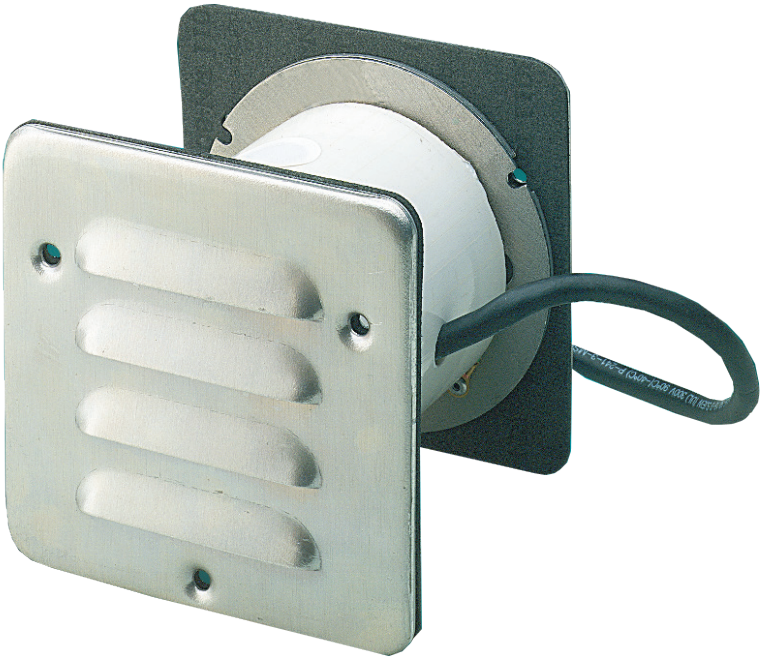


### SPECIFICATIONS

**MATERIAL:** U.L. Recognized Thermoplastic  
**FINISH:** Textured Gray  
**SCREENING:** Aluminum  
**GASKETS:** Neoprene, Closed Cell  
**WIRE LEADS:** TYPE SJ, 18" (457mm) Long

DRILLED FOR #10 SCREWS, INSTALLATION REQUIRES  
A 4-1/2" (114mm) x 4-1/2" (114mm) OPENING.

# Pressure Relief Port for Round Cut Out



## W88 SERIES VENT PORT FOR WALK-IN REFRIGERATORS AND FREEZERS

- Heated vents prevent freeze-ups and reduce cooler condensation
- Two way valve unit allows air flow in dual directions, compensates for expansion and contraction during refrigeration cycles
- Supplied in 120V or 220V Models

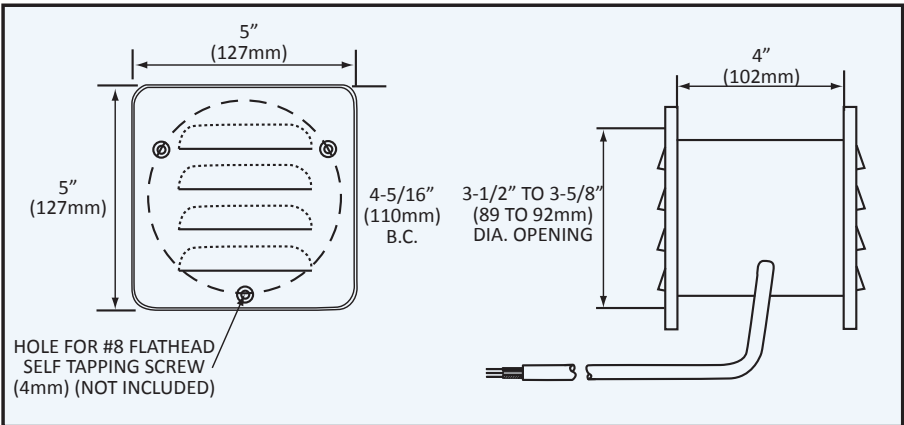
### PRESSURE RELIEF PORT

MODEL NO.	VOLTAGE	APPLICATION
W88-1010	120V/23 Watts with Heater	FREEZER
W88-1012	220V/23 Watts with Heater	FREEZER
W88-2010	Non-Heated	COOLER

REPLACES\* KASON MODEL #1830 & 1834 WITH COMPONENT HARDWARE  
QUALITY HARDWARE

### SPECIFICATIONS

**MATERIAL:** All Aluminum  
**INTERNAL SLEEVE:** Lexan, Self-extinguishing  
**FINISH:** Textured Aluminum  
**ELECTRICAL REQUIREMENTS:** 120V or 220V Specify voltage requirements  
4" (102mm) standard size wall thickness  
When ordering specify other wall thickness. Drilled for No. 8 (4mm) screws



File No. LR29496



File No. E73857

\*May not be identical to competitors' products.



# Window View Port

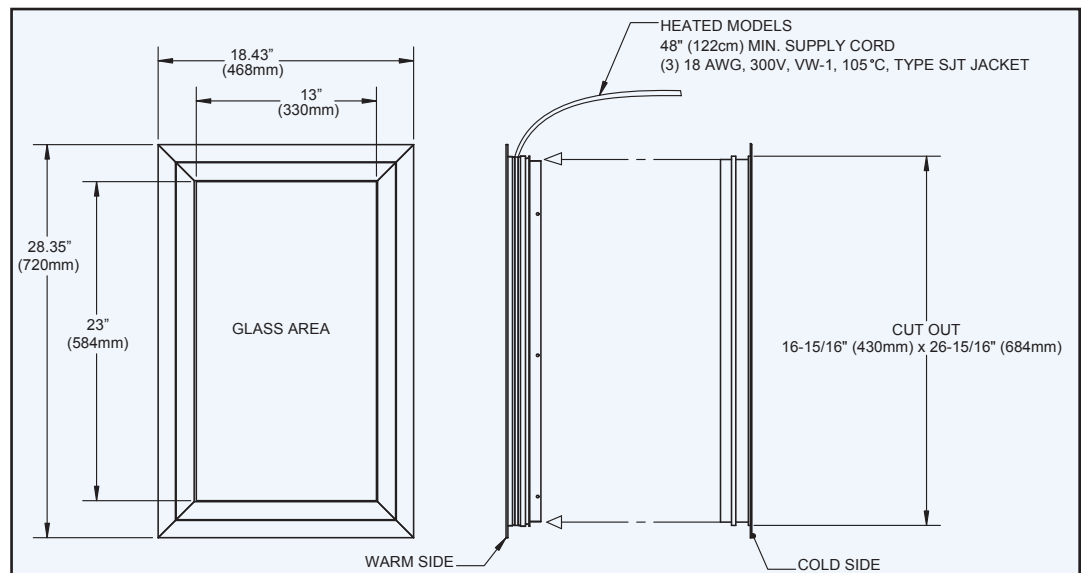
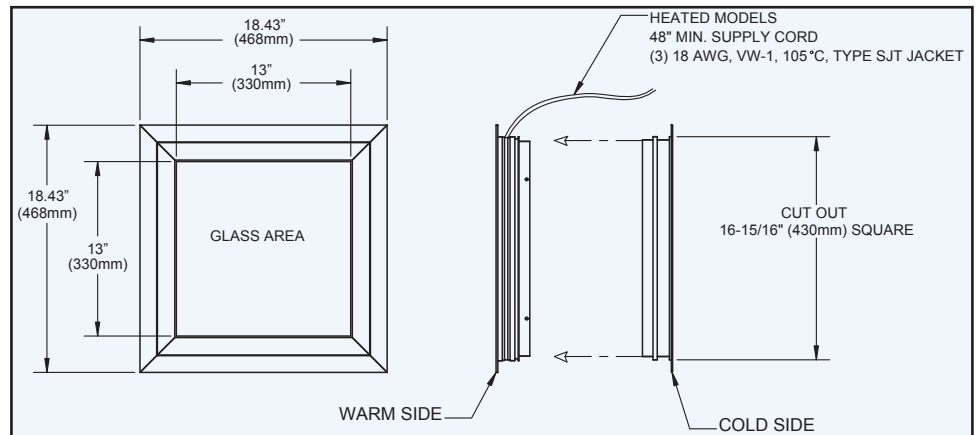


## WINDOW VIEWPORTS

### WITH ALUMINUM COVER FOR WALK-IN COOLER AND FREEZER APPLICATIONS- AVAILABLE HEATED AND NON-HEATED

- Brushed aluminum frame • Tempered triple pane glass on all models
- Argon filled space between glass on all models for added e-factor and to comply with Energy Independence Act of 2007
- Heated models for 120V/60Hz freezer applications to prevent fogging • Helps to minimize ingress/egress accidents
- Ideal for walk-in cooler/freezer applications and environmental chambers

MODEL NO.	DESCRIPTION	CUT-OUT SIZE	DOOR WIDTH	VOLTAGE (VAC)	CURRENT (Amp)	POWER (Watts)	FREQUENCY (Hz)
<b>W91-1414-HGHF</b>	Argon Gas Filled Space Between 3 Layers of Glass with Heated Frame and Heated Glass	16-15/16" (430mm) Square	3-1/2" (89mm) To 4" (102mm)	120	0.7	84	60
<b>W91-14143-UGUF</b>	Argon Gas Filled Space Between 3 Layers of Glass with Un-Heated Frame and Un-Heated Glass			—	—	—	—
<b>W91-1424-HGHF</b>	Argon Gas Filled Space Between 3 Layers of Glass with Heated Frame and Heated Glass	16-15/16" (430mm) x 26-15/16" (684mm)	3-1/2" (89mm) To 4" (102mm)	120	1.0	120	60
<b>W91-14243-UGUF</b>	Argon Gas Filled Space Between 3 Layers of Glass with Un-Heated Frame and Un-Heated Glass			—	—	—	—



NOTE: Double-sided tape exists all around inside surface of flange.

# FIP PANEL FASTENERS

## FOAMED-IN-PLACE PANEL FASTENERS

Component Hardware® brand Foamed-In-Place (FIP) Panel Fasteners are ideal for use in high volume fabrication operations when consistency and outstanding performance are your driving concerns. This fastening system provides a fool-proof method for accurately positioning, inserting and anchoring the fasteners into your insulated panels, that will save you both time and money

## HOW FIP FASTENERS WORK

Simply affix our dedicated panel fastener adapters to your existing foaming jigs to create a permanent anchor point that insures your fasteners are securely and precisely positioned in every foamed panel. The unique design of these adapters guarantees that the locking points and strikes cannot be installed upside down or on the wrong side of the jig, resulting in reduced scrap and production times. In addition, we manufacture these adapters from hardened steel for durability and extended service life.

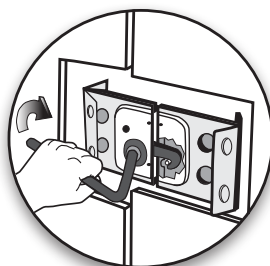
Attaching FIP panel fasteners to your foaming jig is as simple as snapping the locking points and strikes on to their respective adapters, closing the jig and foaming your panels. All of our FIP fasteners are designed with specially placed holes in the housing to permit foam to completely fill around the fastener for superior pull-out strength and better insulating properties.

## THE COMPONENT HARDWARE® DIFFERENCE

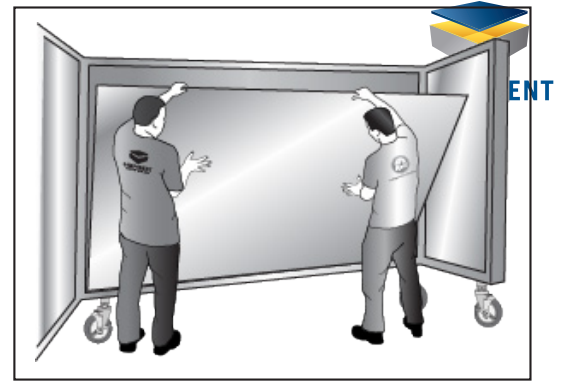
Component Hardware® Refrigeration Hardware is known for innovative design, exceptional value and unsurpassed quality. Our products are manufactured to our exacting standards to insure they can withstand the rigorous demands required in commercial refrigeration applications.

We know that panel fasteners are the “glue” that holds your walk-in cooler/freezer together. If they do not function properly, it can result in increased energy consumption or failure of the structural integrity of the entire unit. That's why all of our panel fasteners undergo rigorous quality inspections to insure our customers of the durability and reliability they have come to know and trust from the Component Hardware® brand.

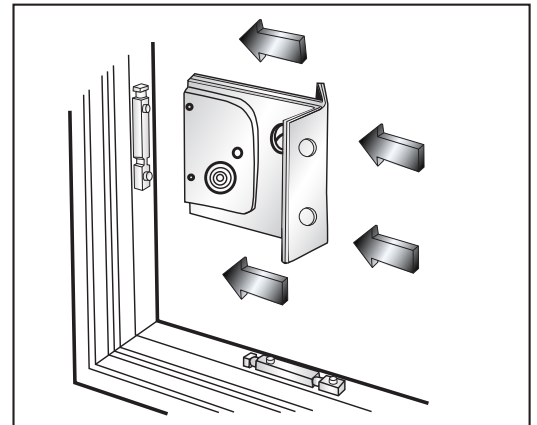
The next time you are building or specifying a walk-in cooler, freezer or environmental enclosure, be sure that it is made using authentic Component Hardware® brand refrigeration hardware for trouble-free performance and peace of mind.



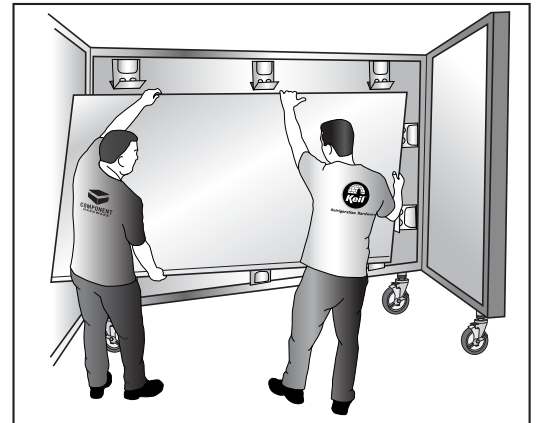
Use Model No. W27-0001-C hexagonal wrench for easy locking of all Component Hardware panel fasteners.



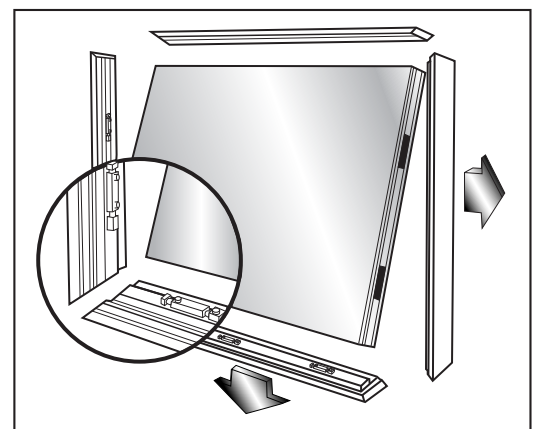
1. Insert outer skin of the panel into the mold.



2. Snap fastener (locking point or strike) onto its unique Component Hardware adapter.



3. Insert inner skin into the mold fixture. Close mold and inject foam.



4. After curing, open the mold and retract edge rails. Remove completed panel with fasteners securely in place. Lock panels using Component Hardware Model No. W27-0001-C wrench.

# FIP Panel Fasteners



## W27 SERIES COMPACT FOAMED-IN-PLACE

### MODEL NO. W27-7300 LOCKING HOOK

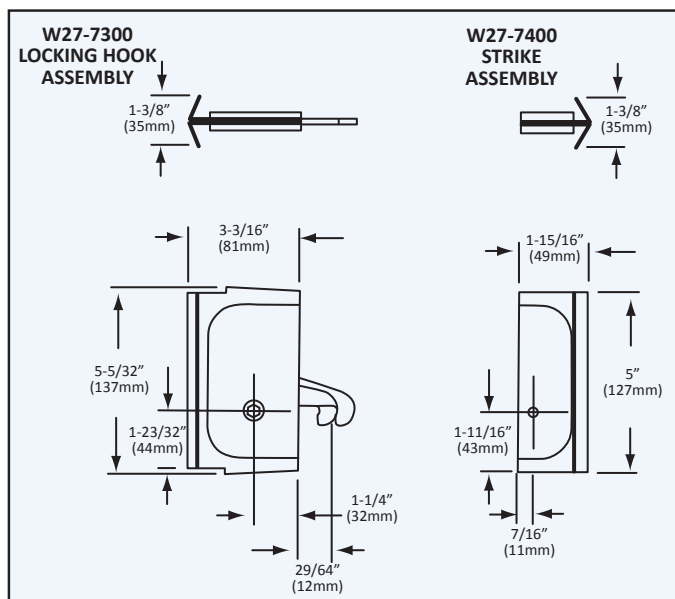
- Friction drive allows hook to slice through foam, locates the female locking pin in mating panel and tightens, providing a positive panel seal
- Zinc plated construction eliminates corrosion concerns and improves mastic adhesion
- Compact construction, superior strength, heavy gauge
  - Permits interchangeability of panels

JIG ADAPTER MODEL NO. W27-1173H

### MODEL NO. W27-7400 STRIKE

- Interchangeable for use on existing foaming jigs and adapters
  - Special guide ribs are built in the female housing which direct the hook to an on-center position
  - Offers reliable repeat service and performance
- Large diameter foam holes ensure positive foam integrity

JIG ADAPTER MODEL NO. W27-8804



REPLACES\* KASON #1173 WITH COMPONENT HARDWARE QUALITY HARDWARE



## W27 SERIES FOAMED-IN-PLACE, DUAL ACCESS DESIGN

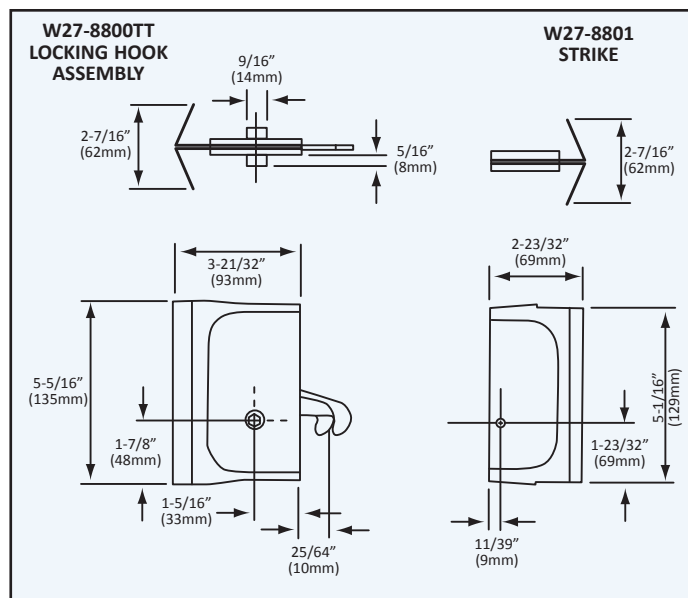
### MODEL NO. W27-8800TT-SP & W27-8800TT-SS TWIN TUNNEL LOCKING HOOK

### MODEL NO. W27-8801-SP & W27-8801-SS STRIKE

- Unique Twin Tunnel design provides access to either panel side
  - Provides a positive panel seal
- Interchangeable-for use on existing foaming jigs and adapters
- Friction drive allows hook to slice through foam, locates the female locking pin in mating panel and tightens
  - Heavy gauge, superior strength and economical
  - Zinc plated construction eliminates corrosion concerns and improves mastic adhesion
- Standard flush and extended "Twin-Tunnel" cams available
  - Plastic tunnel cap included at no extra charge
  - Wide fastener wings enhance pull-out strength
- Large diameter foam flow holes ensure positive foam integrity

JIG ADAPTER FOR HOOK: MODEL NO. W27-8803

JIG ADAPTER FOR PIN: MODEL NO. W27-8804

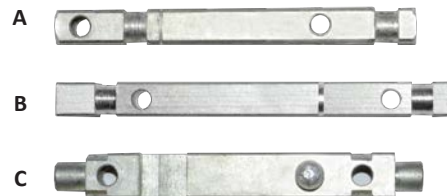


REPLACES\* KASON #1188 WITH COMPONENT HARDWARE QUALITY HARDWARE

## PANEL FASTENER JIG ADAPTERS

- For foam-in-place applications
- Readily replaces\* all competitor's adapters having same mounting holes with Component Hardware Quality Hardware
- Hardened Steel and Electroplated
- Adapters available for ALL Component Hardware Foamed-in-Place Fasteners
- Competitive pricing

REF.	MODEL NO.	FITS PANEL FASTENER MODELS
A	W27-1173H	W27-7300, 1168BP & 1169BP
B	W27-8803	W27-8800TT & 1188BP
C	W27-8804	W27-8801, W27-7400 & 1188P



# SLAB FOAM PANEL FASTENERS

## HOW TO BUILD INSULATED PANELS WITHOUT COSTLY TOOLING

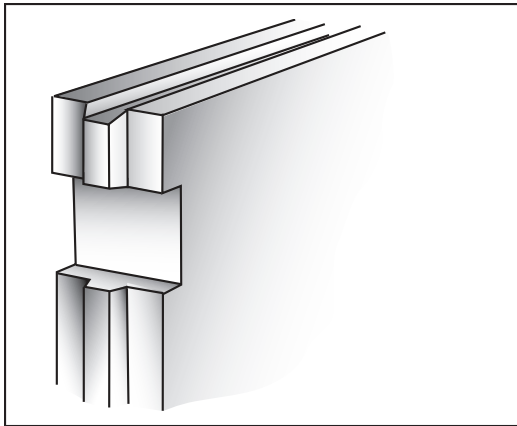
Slab Foam Panel Fasteners are ideal for fabricators looking for a low cost method of constructing light weight insulated panels using Styrene, Styrofoam or urethane sheet stock. These plastic block fasteners are available for 2", 4" & 6" wide panels to accommodate applications including environmental enclosures, walk-in coolers and walk-in freezers.

## THE COMPONENT HARDWARE® DIFFERENCE

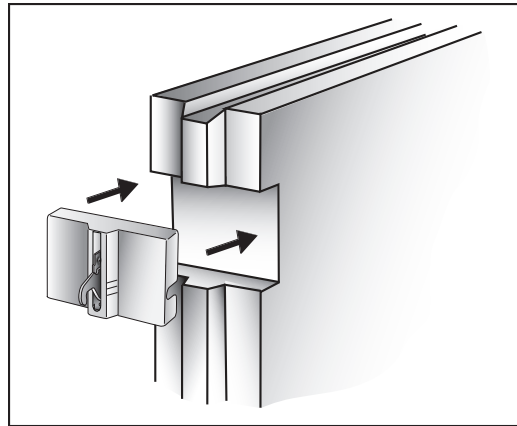
Component Hardware® Refrigeration Hardware is known for innovative design, exceptional value and unsurpassed quality. Our products are manufactured to our exacting standards to insure they can withstand the rigorous demands required in commercial refrigeration applications.

We know that panel fasteners are the "glue" that holds your walk-in cooler/freezer together. If they do not function properly, it can result in increased energy consumption or failure of the structural integrity of the entire unit. That's why all of our panel fasteners undergo rigorous quality inspections to insure our customers of the durability and reliability they have come to know and trust from the Component Hardware® brand.

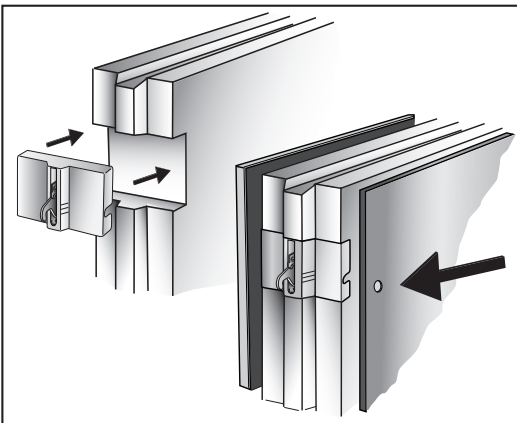
The next time you are building or specifying a walk-in cooler, freezer or environmental enclosure, be sure that it is made using authentic Component Hardware® brand refrigeration hardware for trouble-free performance and peace of mind.



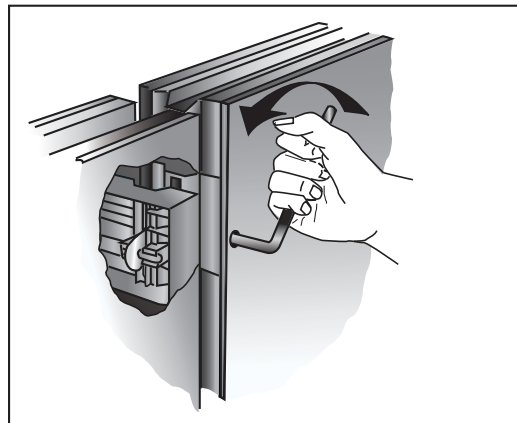
1. Cut insulating material to size. Shape tongue and groove surfaces. Notch panel for fastener.



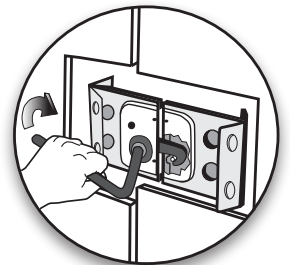
2. Insert plastic housing, either locking point or strike, as needed.



3. Apply adhesive to metal skins. Laminate foam between two skins and apply pressure for bonding. (Return bend on metal helps to hold fastener in place.)



4. After curing, panels are ready for assembly. Completed panels are easily locked in position at assembly site using the Component Hardware W27-0001-C.



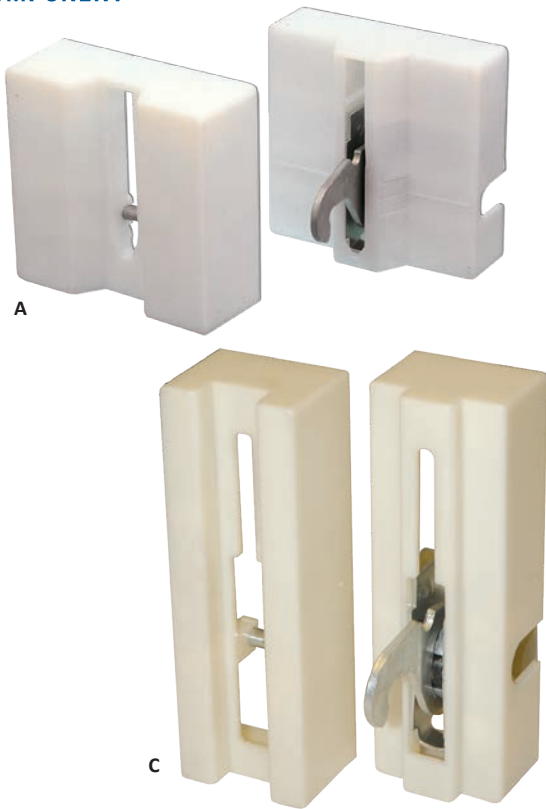
Use Model No. W27-0001-C hexagonal wrench for easy locking of all Component Hardware panel fasteners.

# Slab Foam Panel Fasteners



COMPONENT

## W27 SERIES SLAB FOAM ABS BLOCK



REF. A

### SLAB FOAM ABS BLOCK PANEL FASTENERS

#### MODEL NO. W27-5204

For Gasketed 4" (102mm) Panels

REF. B

### SLAB FOAM ABS BLOCK PANEL FASTENERS with FOAM INSULATED BACKING

#### MODEL NO. W27-5304

For Gasketed 4" (102mm) Panels  
EPS Foam Filled

#### MODEL NO. W27-5306

For Gasketed 6" (152mm) Panels  
PU Foam Filled

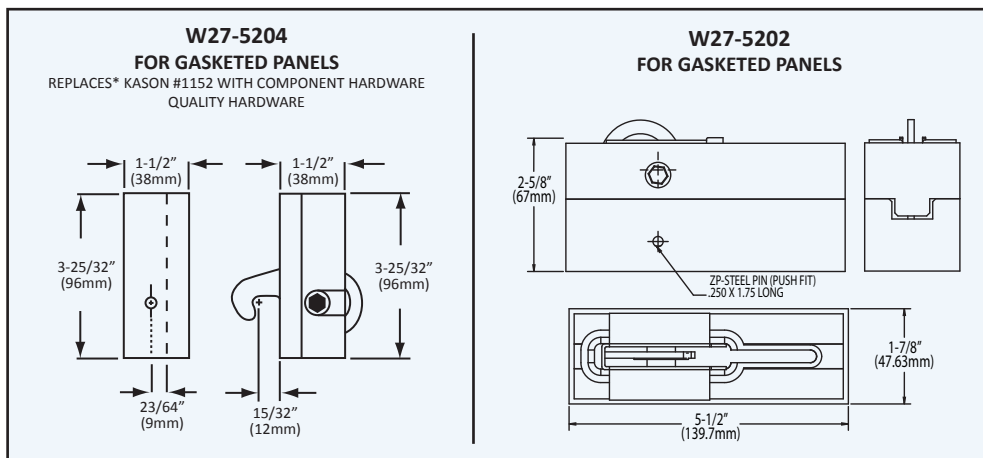
REF. C

### SLAB FOAM ABS BLOCK PANEL FASTENERS

#### MODEL NO. W27-5202

For Gasketed 2" (51mm) Panels

- Unbreakable ABS housing, zinc plated heavy gauge steel hook and pin
- Permanently attached hook and strike insures integrity and can be activated time and time again
- For use with 2" (51mm), 4" (102mm) and 6" (152mm) panels
- Economical





# RIGID RAIL PANEL FASTENERS

## DESIGNED ESPECIALLY FOR WOOD, HIGH DENSITY FOAM OR METAL FRAME RAILS

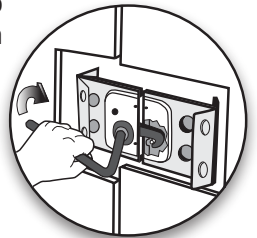
This series of Component Hardware® brand panel fasteners is designed for use with wood, high density foam or metal frame rail insulated panels. This economical method of producing pre-fabricated insulated panels permits the manufacturer to build panel sections of virtually any size or shape. We offer a wide array of rigid rail locking points, strikes and pins, which may be combined to accommodate a broad range of panel thicknesses, joint types and rail materials.

## THE COMPONENT HARDWARE® DIFFERENCE

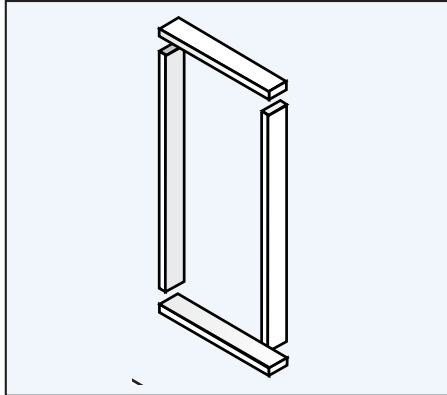
Component Hardware® Refrigeration Hardware is known for innovative design, exceptional value and unsurpassed quality. Our products are manufactured to our exacting standards to insure they can withstand the rigorous demands required in commercial refrigeration applications.

We know that panel fasteners are the “glue” that holds your walk-in cooler/freezer together. If they do not function properly, it can result in increased energy consumption or failure of the structural integrity of the entire unit. That’s why all of our panel fasteners undergo rigorous quality inspections to insure our customers of the durability and reliability they have come to know and trust from the Component Hardware® brand.

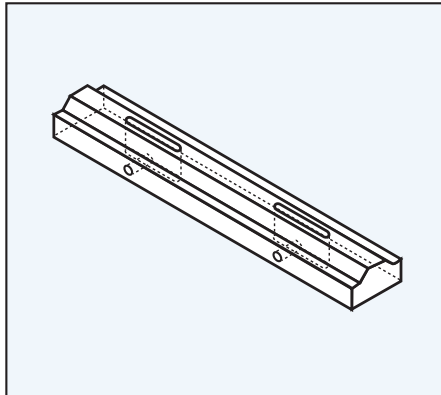
The next time you are building or specifying a walk-in cooler, freezer or environmental enclosure, be sure that it is made using authentic Component Hardware® brand refrigeration hardware for trouble-free performance and peace of mind.



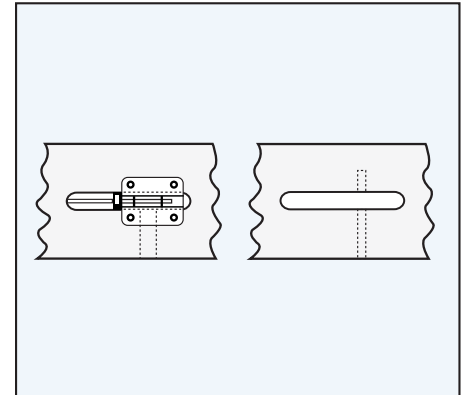
Use Model No. W27-0001-C hexagonal wrench for easy locking of all Component Hardware panel fasteners.



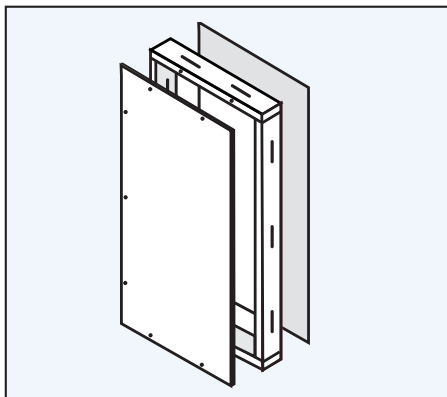
1. Cut frame material to form panel perimeter.



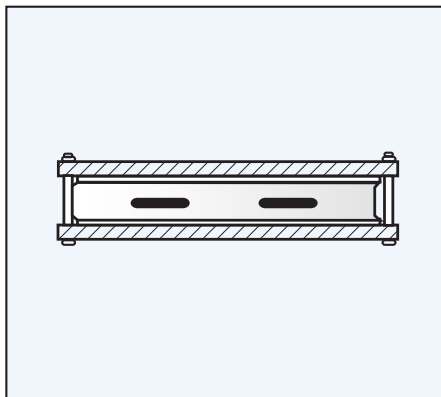
2. Determine locations for fasteners and mortise, dado, or rout slots. Drill wrench holes. (If using W27-5501/5502, drill pin holes.)



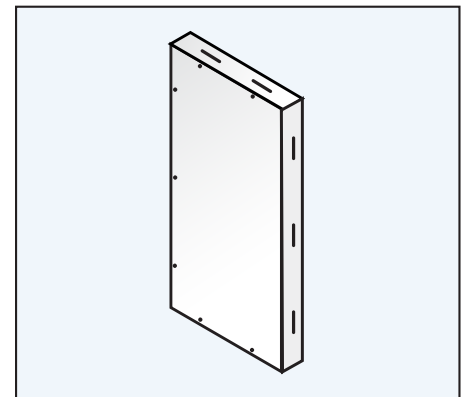
3a. Place fastener in slot and nail or staple in place.  
3b. If using W27-5501/5502 pin, insert in drilled pin holes. (Taping of back may be required when foaming.)



4. Assemble frame with panel skins.

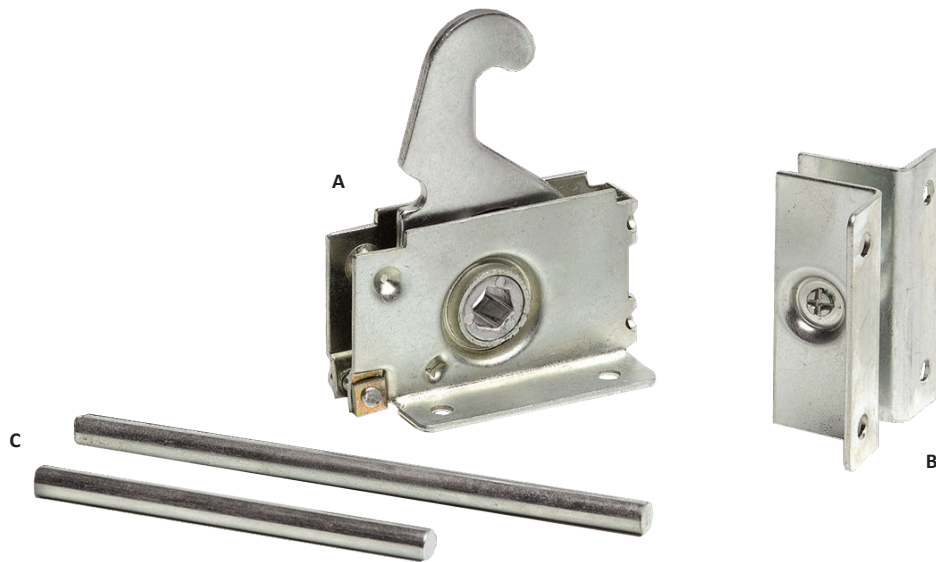


5. Clamp panel in restraining fixture and inject foam.



6. The finished panels are ready for fast, easy joining using W27-0001-C wrench.

# Rigid Rail Panel Fasteners



## W27 SERIES WOOD FRAME AND METAL FRAME

### MODEL NO. W27-5600A & W27-5600B LOCKING HOOK

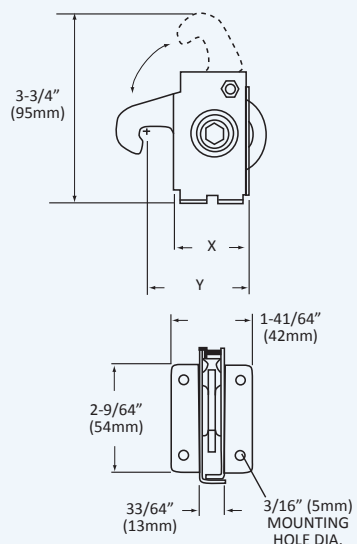
MODEL NO.	X	Y
W27-5600A	1-7/16" (37mm)	1-31/32" (50mm)
W27-5600B	1-7/16" (37mm)	2-11/32" (60mm)

- Zinc plated
- Ideal for wood, high density rail or metal frame construction
- Stamped holes provided for easy mounting with staple, screw or nails
  - Heavy-duty steel housing
- Assorted offset strike assemblies or strike pins available
  - Economical

### MODEL NO. W27-55 SERIES LOCKING STRIKE

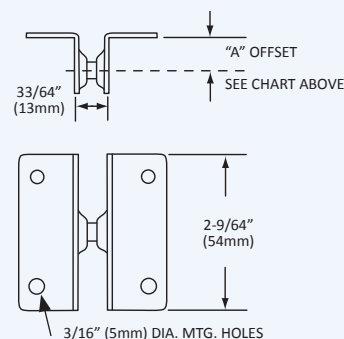
MODEL NO.	"A" OFFSET
W27-5550	1/2" (13mm)
W27-5562	5/8" (16mm)
W27-5568	11/16" (17mm)
W27-5575	3/4" (19mm)
W27-5581	13/16" (21mm)

#### REF. A W27-5600A & W27-5600B LOCKING HOOK



REPLACES\* KASON #1156A & 1156B WITH  
COMPONENT HARDWARE QUALITY HARDWARE

#### REF. B W27-55xx LOCKING STRIKE



#### REF. C W27-5501 PIN, SHORT

3-1/4" (82mm) x 1/4" (6mm) DIA.

REPLACES\* WITH KASON #1156-36  
WITH COMPONENT HARDWARE QUALITY HARDWARE

#### W27-5502 PIN, LONG

4-3/4" (120mm) x 1/4" (6mm) DIA.

REPLACES\* KASON #1155 WITH  
COMPONENT HARDWARE QUALITY HARDWARE

# Accessories for Walk-In Refrigeration & Freezers



## ACCESSORIES FOR WALK-IN REFRIGERATION & FREEZERS

REF. A

### CAULKING GUN

For Use with  
10.3 oz (305ml) cartridges

**MODEL NO. Q99-1000**

REF. D

### SNAP-IN FINISHING CAP

**MODEL NO. W27-0002-C**

- 3/4" diameter
- Max hole diameter 49/64"
- Grey polyethylene
- For use with W27 series panel fastener
- Covers wrench holes for clean appearance

REF. B

### SILICONE SEALER

- Fits all standard caulking guns
  - F.D.A. APPROVED
  - U.L. RECOGNIZED
- MEETS F.D.A. EXTRACTION REQUIREMENT
- Silicone Sealant 10.3 oz (305ml) cartridge
  - Supplied with removable tip



File No. E224060

MODEL NO.	COLOR	MAXIMUM SERVICE TEMP.
M90-1010	CLEAR	400°F (232°C)
M90-1012	ALUMINUM	400°F (232°C)

Sold in case quantities – 12 tubes per case

REF. E

### SNAP-ON MOULDING

- Stainless steel cover with galvanized back plate
- Ideal for use as a back-up plate for gaskets around door jam

MODEL NO.	WIDTH
J60-2220*	1/2" (13mm)
J60-2240	3/4" (19mm)
J60-2260	1" (25mm)
J60-2270	1-1/4" (32mm)
J60-2320*	2" (51mm)

12 FT. (3657mm) LENGTHS \*NON-STOCK ITEM AVAILABLE ON APPLICATION SPECIAL LENGTHS AVAILABLE UPON REQUEST

REF. C

### HEX WRENCH

**MODEL NO. W27-0001-C**  
**MODEL NO. W27-0001-CTS\***

\*Hex wrench with rubber sleeve

- 6" x 6" (152mm x 152mm)
  - Hardened steel
- For use with W27 series panel fasteners
- Readily replaces competitors' wrenches

REF. F

### PRESSURE SENSITIVE INDUSTRIAL TAPE

MODEL NO.	DESCRIPTION	SIZE	CASE QTY
Q84-1200	MASKING TAPE	2" x 60 YDS (51mm x 54m)	24 CASE

# Index

MODEL NO.	PAGE NO.	MODEL NO.	PAGE NO.	MODEL NO.	PAGE NO.	MODEL NO.	PAGE NO.
FIP-PANEL FASTENERS	EE21	W28-2605	EE4	W58-3150	EE12	W59-4175	EE13
J60-2220	EE27	W28-2800X	EE4	W58-3162	EE12	W59-4187	EE13
J60-2240	EE27	W28-3400X	EE4	W58-3175	EE12	W59-4200	EE13
J60-2260	EE27	W28-3800X	EE4	W58-3187	EE12	W60-1000	EE9
J60-2270	EE27	W29-1000X	EE1	W58-3200	EE12	W60-1000-S	EE9
J60-2320	EE27	W29-2000	EE1	W58-4000	EE12	W60-1012	EE9
M90-1010	EE27	W29-5000-4X	EE5	W58-4012	EE12	W60-1012-S	EE9
M90-1012	EE27	W30-1000	EE1	W58-4025	EE12	W60-1025	EE9
Q84-1200	EE27	W30-1000-L	EE1	W58-4037	EE12	W60-1025-S	EE9
Q99-1000	EE27	W30-2000	EE1	W58-4112	EE12	W60-1037.	EE9
RIGID RAIL-		W30-2000-L	EE1	W58-4125	EE12	W60-1037-S	EE9
PANEL FASTENERS	EE25	W31-1000X	EE1	W58-4137	EE12	W60-1112	EE9
R55-1010	EE14	W37-3000-SS	EE8	W58-4150	EE12	W60-1125	EE9
R55-1020	EE14	W38-1000	EE3	W58-4162	EE12	W60-1137	EE9
SLAB FOAM-		W38-1000-C	EE3,EE8	W58-4175	EE12	W60-1150	EE9
PANEL FASTENERS	EE23	W38-1000-C-GE	EE8	W58-4187	EE12	W60-1162	EE9
T90-DM120	EE17	W38-1000-SN	EE3	W58-4200	EE12	W60-1175	EE9
T90-330	EE17	W38-1000-C-SN	EE3	W59-1000	EE13	W60-1187	EE9
T90-25HP	EE17	W38-1500	EE3	W59-1012	EE13	W60-1200	EE9
T90-6142	EE17	W38-1500-C	EE3	W59-1025	EE13	W60-2000	EE9
T90-6812	EE17	W38-1500-SN	EE3	W59-1037	EE13	W60-2025	EE9
W19-1000	EE2	W38-1500-C-SN	EE3	W59-1112	EE13	W60-2112	EE9
W19-1000-C	EE2	W38-1600LSSGE	EE8	W59-1125	EE13	W60-2137	EE9
W19-1000-SN	EE2	W38-2000	EE3	W59-1137	EE13	W61-1000	EE11
W19-1000-C-SN	EE2	W38-2000-C	EE3	W59-1150	EE13	W61-1012	EE11
W19-1500	EE2	W38-4216LSSGE	EE8	W59-1162	EE13	W61-1025	EE11
W19-1500-C	EE2	W38-6000-C-GE	EE8	W59-1175	EE13	W61-1037	EE11
W19-2000	EE2	W50-1000	EE2	W59-1187	EE13	W61-1112	EE11
W19-2000-C	EE2	W55-0001	EE14	W59-1200	EE13	W61-1125	EE11
W27-0001-C	EE27	W55-1000	EE14	W59-2000	EE13	W61-1137	EE11
W27-0001-CTS	EE27	W56-1000	EE14	W59-2012	EE13	W61-1150	EE11
W27-0002-C	EE27	W58-1000	EE12	W59-2025	EE13	W61-1162	EE11
W27-1173H	EE22	W58-1012	EE12	W59-2037	EE13	W61-1175	EE11
W27-5202	EE24	W58-1025	EE12	W59-2112	EE13	W61-1187	EE11
W27-5204	EE24	W58-1037	EE12	W59-2125	EE13	W61-1200	EE11
W27-5304	EE24	W58-1112	EE12	W59-2137	EE13	W61-2000	EE11
W27-5306	EE24	W58-1125	EE12	W59-2150	EE13	W61-2012	EE11
W27-5501	EE26	W58-1137	EE12	W59-2162	EE13	W61-2025	EE11
W27-5502	EE26	W58-1150	EE12	W59-2175	EE13	W61-2037	EE11
W27-5550	EE26	W58-1162	EE12	W59-2187	EE13	W61-2112	EE11
W27-5562	EE26	W58-1175	EE12	W59-2200	EE13	W61-2125	EE11
W27-5568	EE26	W58-1187	EE12	W59-3000	EE13	W61-2137	EE11
W27-5575	EE26	W58-1200	EE12	W59-3012	EE13	W61-2150	EE11
W27-5581	EE26	W58-2000	EE12	W59-3025	EE13	W61-2162	EE11
W27-5600A	EE26	W58-2012	EE12	W59-3037	EE13	W61-2175	EE11
W27-5600B	EE26	W58-2025	EE12	W59-3112	EE13	W61-2187	EE11
W27-7300	EE22	W58-2037	EE12	W59-3125	EE13	W61-2200	EE11
W27-7400	EE22	W58-2112	EE12	W59-3137	EE13	W61-3000	EE11
W27-8801-SP	EE22	W58-2125	EE12	W59-3150	EE13	W61-3012	EE11
W27-8801-SS	EE22	W58-2137	EE12	W59-3162	EE13	W61-3025	EE11
W27-8800TT-SP	EE22	W58-2150	EE12	W59-3175	EE13	W61-3037	EE11
W27-8800TT-SS	EE22	W58-2162	EE12	W59-3187	EE13	W61-3112	EE11
W27-8803	EE22	W58-2175	EE12	W59-3200	EE13	W61-3125	EE11
W27-8804	EE22	W58-2187	EE12	W59-4000	EE13	W61-3137	EE11
W28-1000	EE5,EE8	W58-2200	EE12	W59-4012	EE13	W61-3150	EE11
W28-1200	EE5	W58-3000	EE12	W59-4025	EE13	W61-3162	EE11
W28-2215-SSX	EE8	W58-3012	EE12	W59-4037	EE13	W61-3175	EE11
W28-2300-SSX	EE4, EE8	W58-3025	EE12	W59-4112	EE13	W61-3187	EE11
W28-2325X	EE4	W58-3037	EE12	W59-4125	EE13	W61-3200	EE11
W28-2400X	EE4	W58-3112	EE12	W59-4137	EE13	W61-4000	EE11
W28-2400-SSX	EE4	W58-3125	EE12	W59-4150	EE13	W61-4012	EE11
W28-2600X	EE4	W58-3137	EE12	W59-4162	EE13	W61-4025	EE11

MODEL NO.	PAGE NO.	MODEL NO.	PAGE NO.	MODEL NO.	PAGE NO.	MODEL NO.	PAGE NO.
W61-4037	EE11						
W61-4112	EE11						
W61-4125	EE11						
W61-4137	EE11						
W61-4150	EE11						
W61-4162	EE11						
W61-4175	EE11						
W61-4187	EE11						
W61-4200	EE11						
W62-0001	EE10						
W62-2001	EE10						
W77-1375	EE10						
W77-1625	EE10						
W86-1010	EE18						
W86-1012	EE18						
W86-1020	EE18						
W86-1024-36	EE18						
W86-2010	EE18						
W88-1010	EE19						
W88-1012	EE19						
W88-2010	EE19						
W91-1414-HGHF	EE20						
W91-14143-UGUF	EE20						
W91-1424-HGHF	EE20						
W91-14243-UGUF	EE20						
W94-1010	EE15						
W94-1020	EE15						
W94-2010	EE15						
W94-2020	EE15						
W95-1010	EE16						
W95-1020	EE16						
W95-1030	EE16						
W95-2010	EE16						
W95-2020	EE16						
W95-2030	EE16						
W99-0100-H	EE8						
W99-0100-L	EE8						
W99-2001	EE9						
W99-2001-GE	EE7						
W99-2063	EE8						
W99-2063-GE	EE8						
W99-3800-SS	EE7						
W99-3800-SS-C	EE7						
W99-3815-SS	EE7						
W99-3815-SS-C	EE7						
W99-3820-SS	EE7						
W99-4100-SSLH	EE6						
W99-4100-SSRH	EE6						
W99-6015-SS	EE6						









1890 Swarthmore Avenue • PO Box 2020 • Lakewood • NJ 08701

Tel. 800-526-3694 • 732-363-4700 • Fax 732-364-8110

[www.componenthardware.com](http://www.componenthardware.com)

