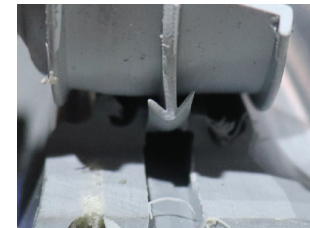


INSTRUCTIONS FOR INSTALLING A REPLACEMENT DOOR GASKET

1. Using a #2 Phillips screw driver remove the 10 screw from the inside edge of the old gasket if they were installed.

2. After old gasket has been removed place new door gasket around door, laying it out across the top and down the sides of the door. With door gasket in position around the door starting at the top corner, firmly seat the spur of the door gasket into the groove of the extrusion along the edge of the door using a hammer. It's important that the spur be positioned over the groove correctly as it needs to be seated on the first impact of the hammer. Continue along the top of the door seating the gasket and then down the sides until you get to the bottom of the door. Trim the bottom of the door gasket so it just covers the metal strip of the door sweep. It should not extend on the rubber door sweep.



3. Using the #2 Phillips screw driver install the 10 USC #0083 screws supplied with this kit into the locations shown on this drawing.

Note: 2-piece gaskets will have 2 additional screws at the top of the door in the middle where the 2 gaskets meet.

